

KANSAS DEPARTMENT OF TRANSPORTATION  
SPECIAL PROVISION LIST

PAGE: 1  
DATE: 10/15/18

STATE PROJECT NO: K025-034 KA 5096-01

STATE CONTRACT NO: 518112646

PREPARED DATE:

WAGE AREA: 1

REVISED DATE:

PRIMARY DISTRICT: 6

PRIMARY COUNTY: GRANT

DESCRIPTION: SURFACE RECYCLE AND CHIP SEAL. K25 FR SV/GT CO LI N TO SCL OF ULYSSES  
IN GT CO. LENGTH IS 13.363 MI. TIE TO K025-095 KA 5095-01.

NOTE: THE FOLLOWING LIST OF SPECIAL PROVISIONS ARE FOR THIS PROJECT.  
OMISSION OF ALL OR PART OF A SPECIAL PROVISION IN THE ATTACHED  
PROPOSAL (CONTRACT) DOES NOT RELIEVE THE CONTRACTOR OF THE  
RESPONSIBILITY FOR OBTAINING THE COMPLETE PROVISION AS LISTED.

PROVISION NO. DESCRIPTION

---

08-31-09-R01	REQUIRED CONTRACT PROVISION-EMULSIFIED ASPHALT ADJUSTMENT
08-10-66-R05	REQUIRED CONTRACT PROVISION-NONCOLLUSION / HISTORY-DEBARMENT
04-30-82-R07	REQUIRED CONTRACT PROVISION-FINANCIAL PREQUALIFICATION
08-04-92-R03	REQUIRED CONTRACT PROVISION-CONTRACTUAL SERVICES-LEGISLATOR
04-26-90-R05	REQUIRED CONTRACT PROVISION-LIMITS OF FED FUNDS FOR LOBBYING
10-10-00-R08	REQUIRED CONTRACT PROVISION-PRICE ADJUSTMENT FOR FUEL
07-19-80-R13	REQUIRED CONTRACT PROVISION-DBE CONTRACT GOAL
11-03-80-R09	REQUIRED CONTRACT PROVISION-NOTICE FOR AFFIRMATIVE ACTION
11-15-96-R05	REQUIRED CONTRACT PROVISION-EEO REQUIREMENT
07-01-17-R1	REQUIRED CONTRACT PROVISION - BOYCOTT OF ISRAEL PROHIBITED
01-01-11-R01	REQUIRED CONTRACT PROVISION-TAX CLEARANCE CERTIFICATE
09-06-94-R01	NOTICE TO CONTRACTORS (USDOT HOTLINE)
KS180019	MINIMUM WAGE RATE (AREA 1)
FHWA-1273	REQUIRED CONTRACT PROVISION-FEDERAL-AID CONSTRUCTION CONTRACTS
03-10-06-R01	REQUIRED CONTRACT PROVISION-DBE SUPPLIERS/REGULAR DEALERS
07-18-80-R29	REQUIRED CONTRACT PROVISION-UTILIZATION OF DBE'S
15-ER-1-R14	ERRATA SHEET FOR STD SPEC BOOK FOR RD & BR CONST, 2015 ED
03-01-18	POLICY AGAINST SEXUAL HARASSMENT
15-01006-R01	WORKING DAYS AND LIQUIDATED DAMAGES
15-01008-R01	FUEL ADJUSTMENT
15-01010	EMULSIFIED ASPHALT ADJUSTMENT
15-01011-R06	ENVIRONMENTAL CONCERNS - MIGRATORY BIRD TREATY ACT
15-01012-R01	SEASONAL LIMITATIONS
15-01016-R02	PROSECUTION AND PROGRESS
15-01017	CARGO PREFERENCE ACT
15-01018	CONTROL OF MATERIALS
15-01019	CONTROL OF WORK
15-01021-R01	BIDDING REQUIREMENTS AND CONDITIONS
15-01022	SCOPE OF WORK
15-08001-R03	WORK ZONE TRAFFIC CONTROL AND SAFETY (FOR 1R'S)
15-12001	GENERAL REQUIREMENT DIVISION 1200
15-22005-R01	IMAGE SYSTEMS
15-22006	RETROREFLECTIVE SHEETING
15-25001-R06	PART V
15-25002	CONSTRUCTION MANUAL - PART V

KANSAS DEPARTMENT OF TRANSPORTATION  
SPECIAL PROVISION LIST

PAGE: 2  
DATE: 10/15/18

STATE PROJECT NO: K025-034 KA 5096-01

STATE CONTRACT NO: 518112646

PREPARED DATE:

WAGE AREA: 1

REVISED DATE:

PRIMARY DISTRICT: 6

PRIMARY COUNTY: GRANT

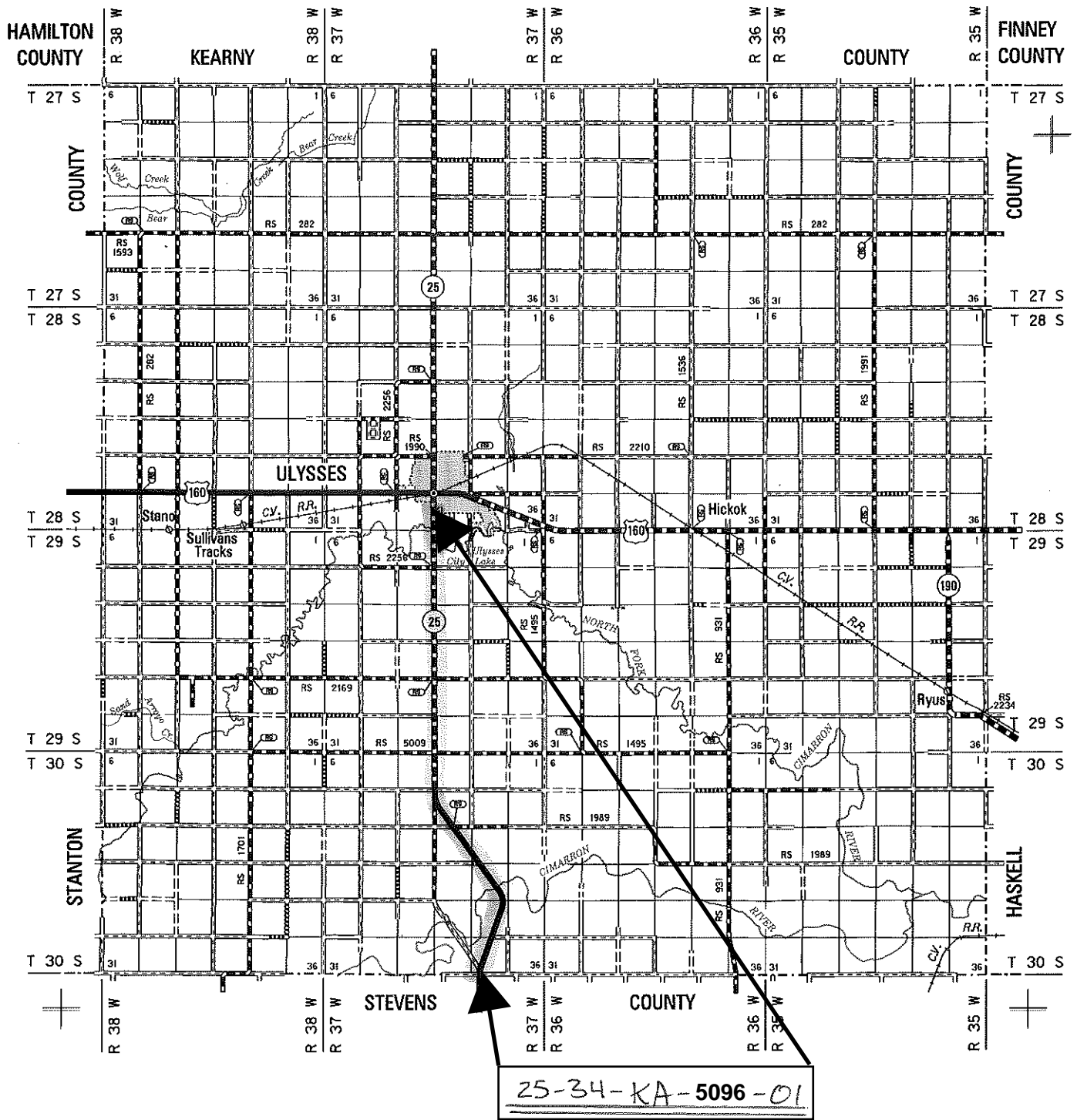
DESCRIPTION: SURFACE RECYCLE AND CHIP SEAL. K25 FR SV/GT CO LI N TO SCL OF ULYSSES  
IN GT CO. LENGTH IS 13.363 MI. TIE TO K025-095 KA 5095-01.

NOTE: THE FOLLOWING LIST OF SPECIAL PROVISIONS ARE FOR THIS PROJECT.  
OMISSION OF ALL OR PART OF A SPECIAL PROVISION IN THE ATTACHED  
PROPOSAL (CONTRACT) DOES NOT RELIEVE THE CONTRACTOR OF THE  
RESPONSIBILITY FOR OBTAINING THE COMPLETE PROVISION AS LISTED.

PROVISION NO. DESCRIPTION

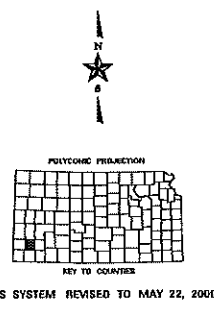
-----  
15-26001-R06 MATERIALS CERTIFICATIONS  
15-PS0018 COMBINATION, TIED BIDS ON 1R PROJECTS WITH FEDERAL-AID FUNDS

END OF SPECIAL PROVISION LIST  
.....



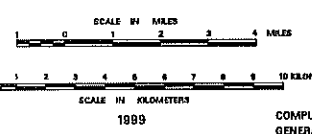
**LEGEND**

ROADS AND ROADWAY FEATURES		ROAD SYSTEM DESIGNATION	
Primitive Road (Type A)	-----	Rural Secondary System	RS
Unimproved Road (Type B)	-----	Interstate Numbered Highway	
Graded and Drained Road (Type C)	-----	U.S. Numbered Highway	
Soil Surfaced Road (Type D)	-----	State Highway System or State Numbered Highway	
Gravel or Stone Road - Graded and Drained (Type E-2)	-----	End of Designated System or Marked Route	-----
Projected Road	-----	Kansas Turnpike Authority	
Bituminous Road - Low Type (Type F, G-1, H-1)	-----		
Paved Road (Type D-2, H-2, I, J, K, L)	-----		
Divided Highway	-----		
Highway With Full Control of Access and Interchange	-----		



**GENERAL HIGHWAY MAP  
GRANT COUNTY  
KANSAS**

PREPARED BY THE  
KANSAS DEPARTMENT OF TRANSPORTATION  
BUREAU OF TRANSPORTATION PLANNING  
IN COOPERATION WITH THE  
U.S. DEPARTMENT OF TRANSPORTATION  
FEDERAL HIGHWAY ADMINISTRATION





## General Notes

8/15/2018

Page 1 of 1

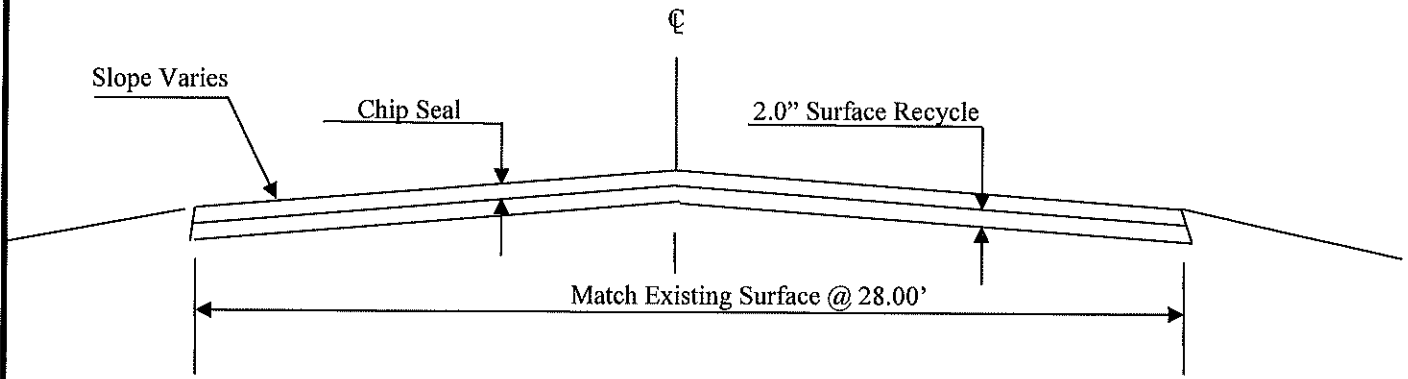
---

Project No. 25- 34 KA 5096-01

### Note

- 1 Permanent Striping to be done by KDOT
  
- 2 The contractor is responsible for establishing and maintaining centerline of the traveled way for the duration of the project. Splitting the traveled way with a tape measure is an acceptable technique to establish centerline. This work is considered subsidiary to other items in the contract.
  
- 3 The contractor shall maintain access to all residences and side roads during construction. No additional compensation will be made for labor, materials or equipment to accomplish this.

**TYPICAL SECTION**



not to scale

**ROADWAY WIDTHS**

Location	Miles	Approx. Width	Location	Miles	Approx. Width
<b><u>SURFACE RECYCLE</u></b>			<b><u>CHIP SEAL</u></b>		
Begin @ Stevens/Grant County Line, thence North to SCL of Ulysses	13.363	28.00'	Begin @ Stevens/Grant County Line, thence North to SCL of Ulysses	13.363	28.00'
<b>Widen(s)</b>			<b>Widen(s)</b>		
			MP 38.67 to 38.866 RT S Taper	0.0356	6.00'
			MP 38.866 to 38.149 RT Full Width	0.1182	12.00'
			MP 38.115 to 38.153 RT N. Taper	0.0074	6.00'
			MP 38.883 to 38.123 LT S. Taper	0.0657	6.00'
			MP 38.123 to 38.236 LT Full Width	0.0214	12.00'
			MP 38.236 to 38.278 LT N. Taper	0.0803	6.00'

**RATE OF APPLICATION**

**CHIP SEAL**

CONV. SEAL CM-L2 W/CRS-1HP  
 ASPH. @ 0.38 gal/sqyd X 8.35 #gal  
 CY @ 0.0082 cuyd/sqyd

**2.0" SURFACE RECYCLE**

Rejuvenating Agent @ 0.35 gal/sqyd X 8.35 #gal

	Date: 8/14/2018	KANSAS DEPARTMENT OF TRANSPORTATION
GRANT Co.	PROJ. NO. 25-34-KA- 5096 -01	TITLE: SR & CHIP SEAL

**SUMMARY OF TRAFFIC CONTROL DEVICES  
(FOR INFORMATION ONLY)**

All traffic control devices shall be placed in accordance with the applicable KDOT Traffic Control Standards. The contractor shall provide all signs and other traffic control devices for proper traffic control of all construction activities. Quantities listed are estimates only. Contractor operations may require additional signs and traffic control devices, this will be subsidiary to the bid item traffic control.

WORK ZONE SIGNS *			
SIGN NO.	SIZE - SQ. FT.		
	0-9.25	9.26-16.25	16.26 & OVER
R2-1	4		
R4-1	2		
W3-4		2	
W3-5		2	
W8-11			
W14-3		2	
W20-1		2	
W20-4		2	
W20-5			
W20-7		4	
W21-5			
W8-15			
W8-15P			
G20-4			
KG20-2	4		
KM4-20	2		
KG-20-5	2		
KI-104a			
KI-105a			

LIGHTED DEVICES *	
WORK ZONE WARNING LIGHT (TYPE "A" LOW INTENSITY)	
WORK ZONE WARNING LIGHT (RED TYPE "B" HIGH INTENSITY)	
ARROW DISPLAY	
PORTABLE CHANGEABLE MESSAGE SIGN	

BARRICADES *		CHANNELIZING DEVICES *		
TYPE III (4' TO 12')	PEDESTRIAN	FIXED	PORTABLE	PEDESTRIAN
			160	

**SUMMARY OF TRAFFIC CONTROL DEVICES  
(EACH)**

WORK ZONE SIGN (SPECIAL)		
SIGN NO.	16.26 SQ. FT. & LESS	16.26 SQ. FT. & OVER

**RECAPITULATION OF QUANTITIES**

ITEM	QUANTITY	UNIT
WORK ZONE SIGNS (0 TO 9.25 SQ. FT.)		EADA
WORK ZONE SIGNS (9.26 TO 16.25 SQ. FT.)		EADA
WORK ZONE SIGNS (16.26 SQ. FT. & OVER)		EADA
WORK ZONE BARRICADES (TYPE 3 - 4' TO 12')		EADA
WORK ZONE BARRICADES (PEDESTRIAN)		EADA
CHANNELIZER (FIXED)		EADA
CHANNELIZER (PORTABLE)		EADA
CHANNELIZER (PEDESTRIAN)		EADA
WORK ZONE WARNING LIGHT (TYPE "A" LOW INTENSITY)		EADA
WORK ZONE WARNING LIGHT (RED TYPE "B" HIGH INTENSITY)		EADA
ARROW DISPLAY		EADA
PORTABLE CHANGEABLE MESSAGE SIGN		EADA
PAVEMENT MARKING (TEMPORARY)		
4" SOLID (TYPE I)		STA./LINE
4" SOLID (TYPE II)		STA./LINE
4" BROKEN (8")(TYPE I)		STA./LINE
4" BROKEN (8")(TYPE II)		STA./LINE
4" BROKEN (3")(TYPE I)	1411.1	STA./LINE
4" BROKEN (3")(TYPE II)		STA./LINE
4" DOTTED EXTENSION (TYPE I)		STA./LINE
4" DOTTED EXTENSION (TYPE II)		STA./LINE
SOLID (LINE MASKING TAPE)		STA./LINE
BROKEN (LINE MASKING TAPE)		STA./LINE
SYMBOL (TYPE I)		EACH
SYMBOL (TYPE II)		EACH
FLEXIBLE RAISED PAVEMENT MARKERS (4" BROKEN (8'))		STA./LINE
FLEXIBLE RAISED PAVEMENT MARKERS (4" BROKEN (3'))	705.6	STA./LINE
PAVEMENT MARKING REMOVAL		LIN. FT.
CONCRETE SAFETY BARRIER (TYPE F3) (TEMPORARY)		LIN. FT.
CONCRETE SAFETY BARRIER (TYPE F3) (TEMP.-INSTALL ONLY)		LIN. FT.
CONCRETE SAFETY BARRIER (TYPE F3) (TEMP.-RELOCATE)		LIN. FT.
INERTIAL BARRIER SYSTEM		EACH
REPLACEMENT MODULES (IBS)		EACH
WORK ZONE SIGN (SPECIAL) (16.25 SQ. FT. & LESS)		EACH
WORK ZONE SIGN (SPECIAL) (16.26 SQ. FT. & OVER)		EACH
RIGID RAISED PAVEMENT MARKER (TYPE I)		EACH
RIGID RAISED PAVEMENT MARKER (TYPE II)		EACH
TRAFFIC SIGNAL INSTALLATION (TEMPORARY)		LUMP SUM
TRAFFIC CONTROL (INITIAL SET UP)		LUMP SUM
TRAFFIC CONTROL	LUMPSUM	LUMP SUM
FLAGGER (SET PRICE)	1	HOURLY

**NOTES:**

3				
2				
1	11/10/16	Removed Replacement Modules Summary Table, Added "(IBS)" to Replacement Modules description	JGB	
NO.	DATE	REVISIONS	BY	APP'D
KANSAS DEPARTMENT OF TRANSPORTATION				
<b>TRAFFIC CONTROL SUMMARY OF DEVICES RECAPITULATION OF QUANTITIES</b>				
TE796				
FHWA APPROVAL	09/01/15	APP'D	Kristina Erickson	
DESIGNED	B.A.H.	DETAILED	R.W.B.	QUANTITIES
				TRACED