

KANSAS DEPARTMENT OF TRANSPORTATION  
SPECIAL PROVISION LIST

PAGE: 1  
DATE: 10/15/18

STATE PROJECT NO: K018-053 KA 5106-01      STATE CONTRACT NO: 518116292

PREPARED DATE:      WAGE AREA:      1

REVISED DATE:

PRIMARY DISTRICT: 2      PRIMARY COUNTY:      LINCOLN

DESCRIPTION:      SURFACE RECYCLE AND CHIP SEAL. K018, FR RS/LC CO LI E TO ECL OF  
LINCOLN IN LC CO. LENGTH IS 18.962 MI.

NOTE:      THE FOLLOWING LIST OF SPECIAL PROVISIONS ARE FOR THIS PROJECT.  
OMISSION OF ALL OR PART OF A SPECIAL PROVISION IN THE ATTACHED  
PROPOSAL (CONTRACT) DOES NOT RELIEVE THE CONTRACTOR OF THE  
RESPONSIBILITY FOR OBTAINING THE COMPLETE PROVISION AS LISTED.

PROVISION NO.      DESCRIPTION

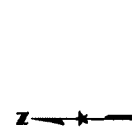
---

08-10-66-R05	REQUIRED CONTRACT PROVISION-NONCOLLUSION / HISTORY-DEBARMENT
08-31-09-R01	REQUIRED CONTRACT PROVISION-EMULSIFIED ASPHALT ADJUSTMENT
04-30-82-R07	REQUIRED CONTRACT PROVISION-FINANCIAL PREQUALIFICATION
08-04-92-R03	REQUIRED CONTRACT PROVISION-CONTRACTUAL SERVICES-LEGISLATOR
05-18-07-R02	REQUIRED CONTRACT PROVISION-REPAIR (STRUCTURES)
10-10-00-R08	REQUIRED CONTRACT PROVISION-PRICE ADJUSTMENT FOR FUEL
11-15-96-R05	REQUIRED CONTRACT PROVISION-EEO REQUIREMENT
07-01-17-R1	REQUIRED CONTRACT PROVISION - BOYCOTT OF ISRAEL PROHIBITED
01-01-11-R01	REQUIRED CONTRACT PROVISION-TAX CLEARANCE CERTIFICATE
KS180019	MINIMUM WAGE RATE (AREA 1)
15-ER-1-R14	ERRATA SHEET FOR STD SPEC BOOK FOR RD & BR CONST, 2015 ED
03-01-18	POLICY AGAINST SEXUAL HARASSMENT
15-01003	REQUIRED CONTRACT PROVISIONS KS FUNDED CONST CONTRACTS
15-01008-R01	FUEL ADJUSTMENT
15-01010	EMULSIFIED ASPHALT ADJUSTMENT
15-01011-R06	ENVIRONMENTAL CONCERNS - MIGRATORY BIRD TREATY ACT
15-01012-R01	SEASONAL LIMITATIONS
15-01016-R02	PROSECUTION AND PROGRESS
15-01019	CONTROL OF WORK
15-01021-R01	BIDDING REQUIREMENTS AND CONDITIONS
15-01022	SCOPE OF WORK
15-08001-R03	WORK ZONE TRAFFIC CONTROL AND SAFETY (FOR 1R'S)
15-12001	GENERAL REQUIREMENT DIVISION 1200
15-22005-R01	IMAGE SYSTEMS
15-22006	RETROREFLECTIVE SHEETING
15-25001-R06	PART V
15-25002	CONSTRUCTION MANUAL - PART V
15-26001-R06	MATERIALS CERTIFICATIONS
15-PS0018	COMBINATION, TIED BIDS ON 1R PROJECTS WITH FEDERAL-AID FUNDS
15-RF0101	RAILROAD FLAGGING REQUIREMENTS

END OF SPECIAL PROVISION LIST

---

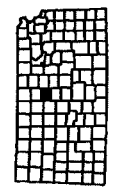
- BOUNDARIES**
- County Boundary
  - State Boundary
  - Military Post Boundary
  - Utility Right-of-Way Boundary
  - Water Right Boundary
  - Section Line
  - Unincorporated City Limit
  - Urban Area
- HIGHWAY MARKERS**
- Interstate
  - Kansas Turnpike Authority
  - U.S. Numbered Highway
  - State Numbered Highway
  - Kansas Turnpike (KTA)
  - U.S. Route - Divided
  - State Route - Divided
  - State Route - Undivided
  - County Road
  - Local Road
  - RD Route - Paved
  - Minor Road - Unpaved
  - Minor Road - Paved
  - Minor Road - Gravel
  - Minor Road - Dirt
  - Minor Road - Sand
- ROAD CLASSIFICATIONS**
- Interstate
  - Kansas Turnpike Authority
  - U.S. Route - Divided
  - State Route - Divided
  - State Route - Undivided
  - County Road
  - Local Road
  - RD Route - Paved
  - Minor Road - Unpaved
  - Minor Road - Paved
  - Minor Road - Gravel
  - Minor Road - Dirt
  - Minor Road - Sand
- CITIES OR TOWNS**
- State Capital
  - County Seat
  - Populated Place
  - Locality
- OBSTACLES**
- Power or Major Drainage
  - Water
  - Levee or Floodway
  - Other
- MAP SYMBOLS**
- Point
  - Line
  - Area
  - Circle
  - Square
  - Triangle
  - Star
  - Circle with dot
  - Circle with cross
  - Circle with X
  - Circle with Y
  - Circle with Z
  - Circle with A
  - Circle with B
  - Circle with C
  - Circle with D
  - Circle with E
  - Circle with F
  - Circle with G
  - Circle with H
  - Circle with I
  - Circle with J
  - Circle with K
  - Circle with L
  - Circle with M
  - Circle with N
  - Circle with O
  - Circle with P
  - Circle with Q
  - Circle with R
  - Circle with S
  - Circle with T
  - Circle with U
  - Circle with V
  - Circle with W
  - Circle with X
  - Circle with Y
  - Circle with Z
- ROAD SYSTEM CLASSIFICATION**
- 151-159 County Road System
  - 160-169 County Road System
  - 170-179 County Road System
  - 180-189 County Road System
  - 190-199 County Road System
- MAP SYMBOLS**
- Point
  - Line
  - Area
  - Circle
  - Square
  - Triangle
  - Star
  - Circle with dot
  - Circle with cross
  - Circle with X
  - Circle with Y
  - Circle with Z



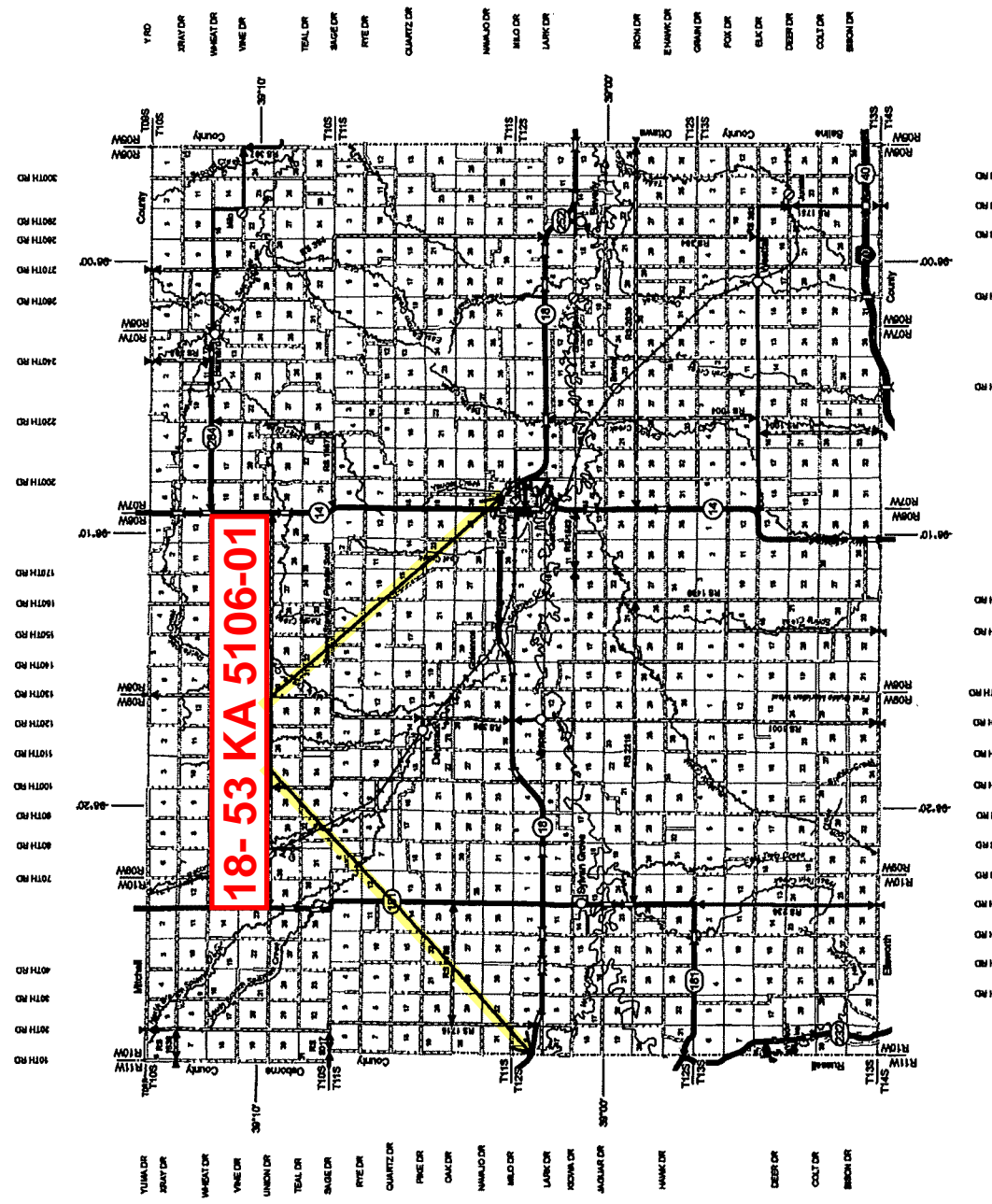
**GENERAL HIGHWAY MAP**  
**LINCOLN COUNTY**  
**KANSAS**  
 PREPARED BY THE  
**KANSAS DEPARTMENT OF TRANSPORTATION**  
**BUREAU OF TRANSPORTATION PLANNING**  
 IN COOPERATION WITH THE  
**U.S. DEPARTMENT OF TRANSPORTATION**  
**FEDERAL HIGHWAY ADMINISTRATION**



MARCH 2016



KDOT makes no warranties, guarantees, or representations for the accuracy of this information and assumes no liability for errors or omissions.





## General Notes

7/6/2018

Page 1 of 1

---

Project No. 18- 53 KA 5106-01

**Note**

- 1 The contractor is responsible for establishing and maintaining centerline of the traveled way for the duration of the project. Splitting the traveled way with a tape measure is an acceptable technique to establish centerline. This work is considered subsidiary to other items in the contract.
- 2 Permanent pavement marking shall be done by KDOT.



**SUMMARY OF TRAFFIC CONTROL DEVICES  
(FOR INFORMATION ONLY)**

All traffic control devices shall be placed in accordance with the applicable KDOT Traffic Control Standards. The contractor shall provide all signs and other traffic control devices for proper traffic control of all construction activities. Quantities listed are estimates only. Contractor operations may require additional signs and traffic control devices, this will be subsidiary to the bid item traffic control.

WORK ZONE SIGNS *			
SIGN NO.	SIZE - SQ. FT.		
	0-9.25	9.25-16.25	16.25 & OVER
R2-1			
R4-1	2		
W3-4		2	
W3-5			
W8-11			
W14-3	2		
W20-1		4	
W20-4		2	
W20-5			
W20-7		4	
W21-5			
G20-4			
KG20-5	8		
KM4-20			
KG20-2	4		
KI-104a			
KI-105a			

LIGHTED DEVICES *	
WORK ZONE WARNING LIGHT (TYPE "A" LOW INTENSITY)	
WORK ZONE WARNING LIGHT (RED TYPE "B" HIGH INTENSITY)	
ARROW DISPLAY	
PORTABLE CHANGEABLE MESSAGE SIGN	

BARRICADES *		CHANNELIZING DEVICES *		
TYPE III (4' TO 12')	PEDESTRIAN	FIXED	PORTABLE	PEDESTRIAN
			75	

**SUMMARY OF TRAFFIC CONTROL DEVICES  
(EACH)**

WORK ZONE SIGN (SPECIAL)		
SIGN NO.	16.25 SQ. FT. & LESS	16.25 SQ. FT. & OVER

RECAPITULATION OF QUANTITIES		
ITEM	QUANTITY	UNIT
WORK ZONE SIGNS (0 TO 9.25 SQ. FT.)		EADA
WORK ZONE SIGNS (9.25 TO 16.25 SQ. FT.)		EADA
WORK ZONE SIGNS (16.25 SQ. FT. & OVER)		EADA
WORK ZONE BARRICADES (TYPE 3 - 4' TO 12')		EADA
WORK ZONE BARRICADES (PEDESTRIAN)		EADA
CHANNELIZER (FIXED)		EADA
CHANNELIZER (PORTABLE)		EADA
CHANNELIZER (PEDESTRIAN)		EADA
WORK ZONE WARNING LIGHT (TYPE "A" LOW INTENSITY)		EADA
WORK ZONE WARNING LIGHT (RED TYPE "B" HIGH INTENSITY)		EADA
ARROW DISPLAY		EADA
PORTABLE CHANGEABLE MESSAGE SIGN		EADA
PAVEMENT MARKING (TEMPORARY)		
4" SOLID (TYPE I)		STA./LINE
4" SOLID (TYPE II)		STA./LINE
4" BROKEN (8')(TYPE I)		STA./LINE
4" BROKEN (8')(TYPE II)		STA./LINE
4" BROKEN (3')(TYPE I)		STA./LINE
4" BROKEN (3')(TYPE II)	1998	STA./LINE
4" DOTTED EXTENSION (TYPE I)		STA./LINE
4" DOTTED EXTENSION (TYPE II)		STA./LINE
SOLID (LINE MASKING TAPE)		STA./LINE
BROKEN (LINE MASKING TAPE)		STA./LINE
SYMBOL (TYPE I)		EACH
SYMBOL (TYPE II)		EACH
FLEXIBLE RAISED PAVEMENT MARKERS (4" BROKEN (8'))		STA./LINE
FLEXIBLE RAISED PAVEMENT MARKERS (4" BROKEN (3'))	999	STA./LINE
PAVEMENT MARKING REMOVAL		LIN. FT.
CONCRETE SAFETY BARRIER (TYPE F3) (TEMPORARY)		LIN. FT.
CONCRETE SAFETY BARRIER (TYPE F3) (TEMP.-INSTALL ONLY)		LIN. FT.
CONCRETE SAFETY BARRIER (TYPE F3) (TEMP.-RELOCATE)		LIN. FT.
INERTIAL BARRIER SYSTEM		EACH
REPLACEMENT MODULES (IBS)		EACH
WORK ZONE SIGN (SPECIAL) (16.25 SQ. FT. & LESS)		EACH
WORK ZONE SIGN (SPECIAL) (16.25 SQ. FT. & OVER)		EACH
RIGID RAISED PAVEMENT MARKER (TYPE I)		EACH
RIGID RAISED PAVEMENT MARKER (TYPE II)		EACH
TRAFFIC SIGNAL INSTALLATION (TEMPORARY)		LUMP SUM
TRAFFIC CONTROL (INITIAL SET UP)		LUMP SUM
TRAFFIC CONTROL	LUMPSUM	LUMP SUM
FLAGGER (SET PRICE)	1	HOUR

NOTES: Signs listed are for 1 typical flagger & pilot car set up. The contractor is responsible for providing all traffic control needed and is subsidiary to the traffic control LSUM item.

3				
2				
1	11/10/16	Removed Replacement Modules Summary Table, Added "(IBS)" to Replacement Modules description	JGB	
NO.	DATE	REVISIONS	BY	APP'D
KANSAS DEPARTMENT OF TRANSPORTATION				
<b>TRAFFIC CONTROL SUMMARY OF DEVICES RECAPITULATION OF QUANTITIES</b>				
<b>TE795</b>				
FWHA APPROVAL		06/01/15	APP'D	Kristina Erickson
DESIGNED	B.A.H.	DETAILED	R.W.B.	QUANTITIES
DESIGN CK.		DETAIL CK.		QUAN. CK.
				TRACED
				TRACE CK.