

U050-029 KA 5094-01

U050-029 KA 5094-01

CONTRACT PROPOSAL**DOT Form No. 202 Rev. 09/18****Contract ID: 518116686**

1. The Secretary of Transportation of the State of Kansas [Secretary] will accept only electronic internet proposals from prequalified contractors for construction, improvement, reconstruction, or maintenance work in the State of Kansas, said work known as Project No.:

U050-029 KA 5094-01 / U050-029 KA 5094-01

The general scope, location and net length are:

**CHIP SEAL. U050 FR EXISTING HEADER E OF SPEARVILLE E TO
FO/ED CO LI IN FO CO. LENGTH IS 9.440 MI.**

2. This is the Proposal of [Contractor] to complete the Project for the amount set out in the accompanying Unit Prices List.

3. The Contractor makes the following ties and riders as part of its Proposal in addition to state ties, if any:

4. Contractors and other interested entities may examine the Bidding Proposal Form/Contract Documents (see paragraph 11 below) at the County Clerk's Office in the County in which the Project is located and at the Kansas Department of Transportation [KODT] Bureau of Construction and Materials, Eisenhower State Office Building, 700 SW Harrison, Topeka, Kansas 66603. Contractors may examine and print the Bidding Proposal Form/Contract Documents by using KDOT's website at <http://www.ksdot.org> and choosing the following selections: "Doing Business", "Bidding & Letting" and "Proposal Information", and using the links provided in the Project information for this project. KDOT will not print and mail paper copies of Proposal Forms. Contractors shall notify KDOT of their intent to bid as a prime contractor by identifying themselves as a Bid Holder on the website above. Contractors shall furnish this notice no later than the close of business on the Monday preceding the scheduled Letting Date. For a fee, Contractors and other interested entities may order paper copies of the KDOT Standard Specifications for State Road and Bridge Construction, 2015 Edition, [Standard Specifications] by using KDOT's website of <http://www.ksdot.org> and choosing the following selections: "Doing Business", "Bidding & Letting" and "Specifications".

5. Contractors shall use the AASHTO's Project Bids software in combination with the electronic bidding system file created for the Project with Project Bids software [EBSX file] to generate an electronic internet proposal. The Project Bids software and Project EBSX file are available on Bid Express' website at <http://www.bidx.com>.

6. Contractors shall only use the the Project Bids software to create a proposal and submit an electronic internet proposal to KDOT using the Bid Express website at <http://www.bidx.com>.

7. The KDOT Bureau of Construction and Materials will only accept electronic internet proposals on-line using Bid Express until 1:00 P.M. Local Time on the Letting Date. KDOT will open and read these proposals at the Eisenhower State Office Building, 700 SW Harrison, Topeka, Kansas 66603 at 1:30 P.M. Local Time on the Letting Date. An Audio Broadcast of the Bid Letting is available at <http://www.ksdot.org/burconsmain/audio.asp>.

8. The Contractor shall execute a contract for the proposed work within ten (10) business days after notice of the award of the contract.

9. The Contractor shall complete the work within 15 working days and number of cleanup days allowed by Standard Specifications, subsection 108.4. A blank field for the number of working days is an indication that the Contractor shall complete the work within the time specified in Project Special Provision "Work Schedule".

10. The Contractor shall complete the Project according to the plans, Standard Specifications, provisions identified in the Special Provision List and all other Contract Documents identified in Standard Specifications subsection 101.3

11. The undersigned declares that the Contractor has carefully examined the Bidding Proposal Form for the Project. The Contractor understands the following:

A. The Bidding Proposal Form consists of the following documents: the Project EBSX files on the Bid Express website (which includes DOT Form 202, required contract provisions, and the Unit Prices List), special provision list, project special provisions, special provisions, Standard Specifications, plans, exploratory work documents, any additional contract information, any addenda, and any amendments the Secretary provides for the Project. The Contractor can obtain these documents at KDOT's website (see paragraph 4).

B. The special provision list identifies all required contract provisions, project special provisions and special provisions that apply to the Project.

C. The Bidding Proposal form becomes the Contractor's Proposal after the Contractor completes the EBSX file, electronically signs the Proposal where required on DOT Form 202, and submits the completed EBSX file documents and bid bond to KDOT using Bid Express. The special provision list, project special provisions, special provisions, Standard Specifications, plans, exploratory work documents, any additional contract information, and any addenda are incorporated by reference into the Proposal. These documents are part of the Contractor's Proposal.

D. In electronically signing this Proposal, the Contractor waives the right to claim that the Contractor misunderstood the contents of the Proposal or the procurement process.

12. The Contractor has inspected the actual location of the work. The Contractor has determined the availability of materials. The Contractor has evaluated all quantities and conditions. In electronically signing this Proposal, the Contractor waives the right to claim that the Contractor misunderstood the scope of the work.

13. SPECIAL PROVISIONS REQUIRING INFORMATION. The following Required Contract Provisions (I-XIV) require the Contractor to furnish information. The current versions of these provisions are contained in the Project EBSX file. Some or all of these apply to the Project as indicated in the Special Provision List. The Contractor shall complete these provisions within the EBSX file. When these documents are required, the Secretary will reject proposals that fail to contain completed Provisions I, II, III or IV in the EBSX file, and may reject proposals that fail to contain completed Provisions V, VI, VII, VIII, IX, X, XI, XII, XIII, or XIV in the EBSX file.

- I. 08-10-66 Certification-Noncollusion & History of Debarment
- II. 04-30-82 Certification-Financial Prequalification Amount
- III. 04-26-90 Declaration-Limitations on Use of Federal Funds for Lobbying
- IV. 07-19-80 DBE Contract Goal
- V. 08-04-92 Certification-Contractual Services with a Current Legislator or a Current Legislator's Firm
- VI. 10-10-00 Price Adjustment for Fuel
- VII. 08-08-01 Furnishing and Planting Plant Materials
- VIII. 06-01-06 Price Adjustment for Asphalt Material
- IX. 05-18-07 Repair (Structures)
- X. 08-31-09 Price Adjustment for Emulsified Asphalt
- XI. 11-15-17 Electric Lighting System Unit Cost
- XII. 04-06-09 ITS Unit Cost
- XIII. 01-01-18 Smart Work Zone System Unit Cost
- XIV. 01-01-11 Kansas Department of Revenue Tax Clearance Certificate

14. The funding source for this Project is STATE. On Projects involving City or County funds, the Secretary acts as the Agent of the City or County and as the administrator of federal or state funds. Each governmental entity's responsibilities are described in a contract between the entities which is available on request.

15. FEDERAL AID DOCUMENTS INCLUDED IN PROPOSAL. If the Project is supported in whole or in part by Federal funds, the latest revisions of the following provisions (I - VI) also apply to the Project. These documents are not included in the Project EBSX file but are accessible on KDOT's website and incorporated by reference into the proposal like other provisions and the exploratory work documents.

- I. 11-03-80 Affirmative Action For EEO
- II. 11-15-96 Affirmative Action & EEO Policies
- III. 09-06-94 U.S. DOT Fraud Hotline
- IV. FHWA-1273 Federal-Aid Required Contract Provisions
- V. 03-10-06 Use of DBE As Aggregate Supplier/Regular Dealer
- VI. 07-18-80 Use of DBE

16. The Secretary reserves the right to reject any and all proposals and to waive any or all technicalities.

17. SIGNATURE SECTION:

A. Electronic Internet Proposal

The person submitting the electronic internet Proposal, on the Contractor's behalf, shall be the person whose digital identification is used to submit this Proposal. That person shall complete paragraphs B and C. The person whose digital identification is used to electronically sign this Proposal binds the Contractor to this Proposal and binds the named individual to the certification in paragraph B.

B. Certification

I CERTIFY THAT I AM AUTHORIZED TO REPRESENT THE CONTRACTOR IN PREPARING AND PRESENTING THIS PROPOSAL. I CERTIFY UNDER PENALTY OF PERJURY THAT THE FOREGOING (INCLUDING BUT NOT LIMITED TO THE INFORMATION CONTAINED IN THE SPECIAL PROVISIONS REFERENCED IN PARAGRAPH 13) IS TRUE AND CORRECT.

EXECUTED ON (DATE IN MM/DD/YYYY FORMAT).

C. Signature

Number of company or joint venture:

Name of company or joint venture:

Name of person signing:

Title of the person signing:

Signature: Electronic Internet Proposal

RELEASED FOR CONSTRUCTION:

Date: _____

Chief of Construction and Materials

KANSAS DEPARTMENT OF TRANSPORTATION
SPECIAL PROVISION LIST

PAGE: 1
DATE: 10/11/18

STATE PROJECT NO: U050-029 KA 5094-01

STATE CONTRACT NO: 518116686

PREPARED DATE:

WAGE AREA: 1

REVISED DATE:

PRIMARY DISTRICT: 6

PRIMARY COUNTY: FORD

DESCRIPTION: CHIP SEAL. U050 FR EXISTING HEADER E OF SPEARVILLE E TO FO/ED CO LI IN
FO CO. LENGTH IS 9.440 MI.

NOTE: THE FOLLOWING LIST OF SPECIAL PROVISIONS ARE FOR THIS PROJECT.
OMISSION OF ALL OR PART OF A SPECIAL PROVISION IN THE ATTACHED
PROPOSAL (CONTRACT) DOES NOT RELIEVE THE CONTRACTOR OF THE
RESPONSIBILITY FOR OBTAINING THE COMPLETE PROVISION AS LISTED.

PROVISION NO. DESCRIPTION

08-10-66-R05	REQUIRED CONTRACT PROVISION-NONCOLLUSION / HISTORY-DEBARMENT
08-31-09-R01	REQUIRED CONTRACT PROVISION-EMULSIFIED ASPHALT ADJUSTMENT
04-30-82-R07	REQUIRED CONTRACT PROVISION-FINANCIAL PREQUALIFICATION
08-04-92-R03	REQUIRED CONTRACT PROVISION-CONTRACTUAL SERVICES-LEGISLATOR
05-18-07-R02	REQUIRED CONTRACT PROVISION-REPAIR (STRUCTURES)
07-01-17-R1	REQUIRED CONTRACT PROVISION - BOYCOTT OF ISRAEL PROHIBITED
01-01-11-R01	REQUIRED CONTRACT PROVISION-TAX CLEARANCE CERTIFICATE
KS180019	MINIMUM WAGE RATE (AREA 1)
03-01-18	POLICY AGAINST SEXUAL HARASSMENT
15-ER-1-R14	ERRATA SHEET FOR STD SPEC BOOK FOR RD & BR CONST, 2015 ED
15-01003	REQUIRED CONTRACT PROVISIONS KS FUNDED CONST CONTRACTS
15-01010	EMULSIFIED ASPHALT ADJUSTMENT
15-01011-R06	ENVIRONMENTAL CONCERNS - MIGRATORY BIRD TREATY ACT
15-01012-R01	SEASONAL LIMITATIONS
15-01016-R02	PROSECUTION AND PROGRESS
15-01019	CONTROL OF WORK
15-01021-R01	BIDDING REQUIREMENTS AND CONDITIONS
15-01022	SCOPE OF WORK
15-08001-R03	WORK ZONE TRAFFIC CONTROL AND SAFETY (FOR 1R'S)
15-12001	GENERAL REQUIREMENT DIVISION 1200
15-22005-R01	IMAGE SYSTEMS
15-22006	RETROREFLECTIVE SHEETING
15-25001-R06	PART V
15-25002	CONSTRUCTION MANUAL - PART V
15-26001-R06	MATERIALS CERTIFICATIONS
15-PS0018	COMBINATION, TIED BIDS ON 1R PROJECTS WITH FEDERAL-AID FUNDS

END OF SPECIAL PROVISION LIST

REQUIRED CONTRACT PROVISION - 08-10-66-R05 (Rev. 07/05)

CERTIFICATION - NONCOLLUSION AND HISTORY OF DEBARMENT

K.A.R. 36-30-4, 49 C.F.R. 29.335, 23 U.S.C. 112(c), 49 U.S.C. 322

Complete the exceptions below if applicable. The Contractor's signature on the last page of the Contractor's Proposal (DOT Form 202) supplies the necessary signature for this Certificate.

NONCOLLUSION

I certify that the Contractor submitting this bid has not, either directly or indirectly, entered into any agreement, participated in any collusion, or otherwise taken any action, in restraint of free competitive bidding in connection with the submitted bid.

HISTORY OF DEBARMENT

I certify that, except as noted below, the Contractor submitting this bid and any person associated with this Contractor in the capacity of owner, partner, director, officer, principal, investigator, project director, manager, auditor, or any position involving the administration of federal funds:

- 1. Are not currently suspended, debarred, voluntarily excluded or disqualified from bidding by any federal or state agency;
- 2. Have not been suspended, debarred, voluntarily excluded or disqualified from bidding by any federal or state agency within the past three years;
- 3. Do not have a proposed debarment pending;
- 4. Within the past three years, have not been convicted or had a civil judgment rendered against them by a court of competent jurisdiction in any matter involving fraud, anti-trust violations, theft, official misconduct, or other offenses indicating a lack of business integrity or business honesty; and
- 5. Are not currently indicted or otherwise criminally or civilly charged by a federal, state, or local government with fraud, anti-trust violations, theft, official misconduct, or other offenses indicating a lack of business integrity or business honesty; and
- 6. Have not had one or more federal, state, or local government contracts terminated for cause or default within the past three years.

Answer 'Yes' if there are exceptions to the above described circumstances. Answer 'No' if there are no exceptions.

Yes **No**

The exceptions, if any, are:

REQUIRED CONTRACT PROVISION - 04-30-82-R07 (Rev. 01/11)

CERTIFICATION - FINANCIAL PREQUALIFICATION AMOUNT

Select the appropriate response below to indicate whether this Proposal exceeds the Contractor's financial prequalification amount. The Contractor's signature on the last page of the Contractor's Proposal (DOT Form 202) supplies the necessary signature for this Certificate.

I understand that I may be required to identify the outstanding contract and subcontract work of my firm, association or corporation on DOT Form 284 prior to an award of contract. Unless I obtain approval, I understand that the Secretary may reject this Proposal if the dollar value of work on this Contract combined with unearned amounts on our unfinished contract and subcontract work exceeds our prequalification amount.

I certify that the amount of this Proposal plus the total unearned amount of other contracts with the Kansas Department of Transportation plus the unearned amount of all other contracts in this state or other states **exceeds** **does not exceed** the financial prequalification amount of our firm, association or corporation. I also certify that our firm, association or corporation has the financial ability to do the work.

If this Proposal exceeds the financial prequalification amount, I certify that I obtained approval to submit this bid from the KDOT representative I have listed below. (Prior approval to exceed the prequalification limit may be made by telephone or personal contact).

KDOT Approval Granted by:

KDOT Approval Date:

REQUIRED CONTRACT PROVISION - 08-04-92-R03 (Rev. 07/05)

CERTIFICATION - CONTRACTUAL SERVICES WITH A CURRENT

LEGISLATOR OR A CURRENT LEGISLATOR'S FIRM

Select the appropriate response below to indicate whether this contract is with a legislator or a firm in which a legislator is a member. The Contractor's signature on the last page of the Contractor's Proposal (DOT Form 202) supplies the necessary signature for this Certificate.

Kansas Law, K.S.A. 46-239(c), requires this agency to report all contracts entered into with any legislator or any member of a firm of which a legislator is a member, under which the legislator or member of the firm is to perform services for this agency for compensation. The Contractor certifies that:

This Contract **is** **is not** with a legislator or a firm in which a legislator is a member. That Legislator is:

Name:

Address:

City State Zip:

Business Telephone:

REQUIRED CONTRACT PROVISION - 08-31-09-R01 (Rev. 03/15)

PRICE ADJUSTMENT FOR EMULSIFIED ASPHALT

The Contractor may accept or reject the application of Special Provision 15-01010 (latest revision) "Emulsified Asphalt Price Adjustment."

Answer 'Accept' if you accept this provision. Answer 'Reject' if you reject this provision and the provision will not be part of the contract.

Accept **Reject**

REQUIRED CONTRACT PROVISION - 01-01-11-R01 (Rev. 07/13)**TAX CLEARANCE CERTIFICATE**

Answer 'Yes' if the Contractor has a current Tax Clearance Certificate. Answer 'No' if the Contractor does not have a current Tax Clearance Certificate.

Yes No

Insert the Tax Clearance Confirmation Number if available at the time of bidding:

Contractors shall have a current Tax Clearance Certificate from the Kansas Department of Revenue [KDOR] at the time of contract award. The Tax Clearance process is a tax account review by KDOR to determine that the Contractor's account is compliant with Kansas tax laws administered by the Director of Taxation. **The Secretary will reject the Contractor's Proposal as non-responsive if the Contractor does not have a current Tax Clearance Certificate at the time of the contract award.**

To obtain a Tax Clearance Certificate, the Contractor shall complete and submit to KDOR an Application for Tax Clearance obtained from KDOR's website at <http://www.ksrevenue.org/taxclearance.htm>. The Application Form can be completed and submitted on-line, by mail, or by fax. After the Contractor submits the Application, KDOR will provide the Contractor a Transaction ID number. The Contractor shall use the Transaction ID number to retrieve the Tax Clearance Certificate. Decisions on on-line applications are generally available the following business day.

After the Contractor obtains the Tax Clearance Certificate, the Contractor shall insert on this Required Contract Provision the Confirmation Number contained in the Certificate or the Contractor shall submit a copy of the Tax Clearance Certificate to the KDOT Bureau of Construction and Materials by hand delivery, mail, e-mail or fax. Before awarding a contract, the Bureau of Construction and Materials will authenticate the Certificate through the Confirmation Number inserted on this Required Contract Provision or contained on the Certificate submitted.

If the Contractor is unable to retrieve the Tax Clearance Certificate or if KDOR denies the Contractor's Application for Tax Clearance, the Contractor shall call KDOR's Special Projects Team at **785-296-3199** to determine why KDOR failed to issue the certificate.

Tax Clearance Certificates are valid for 90 days after issue. To renew a clearance, submit a new Tax Clearance Application. Information pertaining to a Tax Clearance is subject to change for various reasons, including a state tax audit, federal tax audit, agent actions, hearings, and other legal actions. The Tax Clearance Certificate is not "clearance" for all types of taxes the State of Kansas may assess.

Subcontractors also shall have a current Tax Clearance Certificate from KDOR before the Secretary approves them for subcontract work. The Contractor shall submit to the KDOT Field Office the Subcontractor's Tax Clearance Certificate with KDOT Form 259, Request for Approval of Subcontractor.

Line Number	Item Number	Quantity	Unit	Unit Price	Extension Price
Section 01 COMMON ITEMS					
1	025323	1	LS		
	MOBILIZATION				
2	025324	1	LS		
	TRAFFIC CONTROL				
3	070580	1.000	HOUR	\$25.000	\$25.00
	FLAGGER (SET PRICE)				
Section 01 Total					\$25.00
Section 02 ASPHALT SURFACING ITEMS					
4	080672	249.000	TON		
	EMULSIFIED ASPHALT (CRS-1HP) (SEAL)				
5	010813	1168.000	CUYD		
	COVER MATERIAL (CM-L-2)				
6	010112	1.000	MGAL	\$35.000	\$35.00
	WATER (FLEXIBLE PAVEMENT) (SET PRICE)				
7	012809	498.400	STA.		
	MANIPULATION (CHIP SEAL)				
8	071992	498.400	STAL		
	FLEXIBLE RAISED PAVEMENT MARKERS (4" BROKEN (3 FT.))				
Section 02 Total					\$35.00
Section 03 RUMBLE STRIPS					
9	032406	498.400	STA.		
	RUMBLE STRIPS (MILLED) (ASPHALT) (CENTERLINE)				
Section 03 Total					
Item Total					\$60.00

General Decision Number: KS180019 01/05/2018 KS19

Superseded General Decision Number: KS20170019

State: Kansas

Construction Type: Highway

Counties: Allen, Anderson, Atchison, Barber, Barton, Bourbon, Brown, Chase, Chautauqua, Cherokee, Cheyenne, Clark, Clay, Cloud, Coffey, Comanche, Cowley, Crawford, Decatur, Dickinson, Edwards, Elk, Ellis, Ellsworth, Finney, Ford, Gove, Graham, Grant, Gray, Greeley, Greenwood, Hamilton, Harper, Haskell, Hodgeman, Jewell, Kearny, Kingman, Kiowa, Labette, Lane, Lincoln, Logan, Lyon, Marion, Marshall, McPherson, Meade, Mitchell, Montgomery, Morris, Morton, Nemaha, Neosho, Ness, Norton, Osborne, Ottawa, Pawnee, Phillips, Pratt, Rawlins, Reno, Republic, Rice, Rooks, Rush, Russell, Saline, Scott, Seward, Sheridan, Sherman, Smith, Stafford, Stanton, Stevens, Thomas, Trego, Wallace, Washington, Wichita, Wilson and Woodson Counties in Kansas.

HIGHWAY CONSTRUCTION PROJECTS

Note: Under Executive Order (EO) 13658, an hourly minimum wage of \$10.35 for calendar year 2018 applies to all contracts subject to the Davis-Bacon Act for which the contract is awarded (and any solicitation was issued) on or after January 1, 2015. If this contract is covered by the EO, the contractor must pay all workers in any classification listed on this wage determination at least \$10.35 per hour (or the applicable wage rate listed on this wage determination, if it is higher) for all hours spent performing on the contract in calendar year 2018. The EO minimum wage rate will be adjusted annually. Please note that this EO applies to the above-mentioned types of contracts entered into by the federal government that are subject to the Davis-Bacon Act itself, but it does not apply to contracts subject only to the Davis-Bacon Related Acts, including those set forth at 29 CFR 5.1(a)(2)-(60). Additional information on contractor requirements and worker protections under the EO is available at www.dol.gov/whd/govcontracts.

Modification Number	Publication Date
0	01/05/2018

SUKS2013-001 08/02/2013

	Rates	Fringes
CARPENTER (ROUGH)		
Chase, Lyon.....	\$ 15.03	0.00
Finney, Kearny.....	\$ 12.89	6.35
Ottawa, Saline.....	\$ 13.16	7.34
Remaining Counties.....	\$ 12.90	6.39

CARPENTER

Chase.....	\$ 17.96	0.00
Finney, Kearny.....	\$ 14.92	0.00
Lyon.....	\$ 17.13	0.00
Ottawa, Saline.....	\$ 17.70	0.00
Remaining Counties.....	\$ 14.94	0.00
CONCRETE FINISHER		
Chase, Lyon.....	\$ 15.90	0.00
Ottawa, Saline.....	\$ 15.31	0.00
Remaining Counties.....	\$ 14.38	0.00
ELECTRICIAN		
Chase, Lyon, Ottawa, Saline.....	\$ 22.40	3.57
Finney, Kearny.....	\$ 22.56	3.96
Remaining Counties.....	\$ 23.31	4.22
Form Liner and Setter		
Chase, Lyon.....	\$ 13.75	1.85
Remaining Counties.....	\$ 13.45	1.20
IRONWORKER, REINFORCING		
Chase, Lyon.....	\$ 13.59	0.00
Ottawa, Saline.....	\$ 12.97	0.00
Remaining Counties.....	\$ 10.60	0.00
LABORER (COMMON or GENERAL)		
Allen.....	\$ 11.20	0.00
Anderson.....	\$ 17.58	0.00
Atchison.....	\$ 13.08	2.49
Barton.....	\$ 11.37	0.00
Bourbon.....	\$ 12.90	0.00
Brown.....	\$ 13.98	0.00
Chase.....	\$ 16.46	0.00
Cherokee.....	\$ 14.55	0.00
Clark, Morris.....	\$ 12.65	0.00
Cloud.....	\$ 12.65	2.56
Coffey.....	\$ 14.31	1.85
Crawford.....	\$ 12.25	0.00
Decatur.....	\$ 10.78	0.00
Dickinson.....	\$ 14.35	0.00
Ellis.....	\$ 16.96	0.00
Ellsworth.....	\$ 12.15	0.00
Finney, Kearny.....	\$ 12.38	0.00
Ford, Lyon.....	\$ 13.66	0.00
Graham.....	\$ 11.94	0.00
Gray.....	\$ 12.11	0.00
Jewell.....	\$ 11.24	0.00
Kingman.....	\$ 11.52	0.00
Lane.....	\$ 13.91	0.00
Lincoln.....	\$ 13.31	0.00
Marion.....	\$ 14.07	0.00
Marshall.....	\$ 11.53	0.00
McPherson.....	\$ 11.87	0.00
Meade.....	\$ 12.39	0.00
Montgomery, Pratt.....	\$ 11.88	0.00
Nemaha.....	\$ 17.02	0.00
Neosho.....	\$ 11.17	0.00
Osborne.....	\$ 11.84	0.00
Ottawa.....	\$ 10.91	3.34
Pawnee.....	\$ 11.00	0.00

Phillips.....	\$ 11.85	1.25
Remaining Counties.....	\$ 12.33	0.00
Reno.....	\$ 12.50	0.00
Republic, Thomas.....	\$ 12.03	0.00
Rice.....	\$ 11.14	0.00
Russell.....	\$ 11.47	0.00
Saline.....	\$ 10.87	3.36
Sherman.....	\$ 12.81	0.00
Smith.....	\$ 12.78	0.00
Trego.....	\$ 11.30	0.00
Washington.....	\$ 11.56	0.00
Wilson.....	\$ 10.14	0.00
LABORER (FLAGGER)		
Ellsworth.....	\$ 10.25	0.00
Finney, Kearny.....	\$ 9.86	0.00
Ford.....	\$ 11.70	0.00
Graham.....	\$ 10.29	0.00
Gray.....	\$ 11.14	0.00
Mcperson.....	\$ 10.24	0.00
Remaining Counties.....	\$ 10.61	0.00
Sherman.....	\$ 10.73	0.00
Thomas.....	\$ 11.83	0.00
POWER EQUIPMENT OPERATOR: (ASPHALT PAVER SCREED)		
Chase, Lyon, Ottawa, Saline.	\$ 13.97	0.00
Finney, Kearny.....	\$ 13.95	0.00
Remaining Counties.....	\$ 13.94	0.00
POWER EQUIPMENT OPERATOR: (ASPHALT PAVING MACHINE)		
Chase, Lyon, Ottawa, Saline.	\$ 14.94	0.00
Cowley.....	\$ 14.96	0.00
Ellsworth.....	\$ 16.07	0.00
Finney, Kearny.....	\$ 14.92	0.00
Lane.....	\$ 15.11	0.00
Remaining Counties.....	\$ 14.90	0.00
Sherman.....	\$ 14.31	0.00
POWER EQUIPMENT OPERATOR: (BACKHOE)		
Chase, Lyon.....	\$ 17.29	3.08
Finney, Kearny.....	\$ 14.58	0.00
Ottawa, Saline.....	\$ 17.16	2.77
Remaining Counties.....	\$ 14.67	0.00
POWER EQUIPMENT OPERATOR: (BULLDOZER)		
Chase, Lyon, Ottawa, Saline.	\$ 15.57	2.58
Finney, Kearny.....	\$ 15.19	2.40
Remaining Counties.....	\$ 15.06	2.37
POWER EQUIPMENT OPERATOR: (CONCRETE FINISHING MACHINE).....		
	\$ 15.97	0.00
POWER EQUIPMENT OPERATOR: (CONCRETE SAW)		
Chase, Lyon, Ottawa, Saline.	\$ 14.88	0.00
Finney, Kearny.....	\$ 14.85	0.00

Remaining Counties.....\$	14.78	0.00
POWER EQUIPMENT OPERATOR:		
(CRANE)		
Chase, Lyon, Ottawa, Saline.\$	19.38	11.37
Remaining Counties.....\$	18.38	7.66
POWER EQUIPMENT OPERATOR:		
(DISTRIBUTOR-BITUMINOUS)		
Chase, Finney, Kearny, Lyon, Ottawa, Saline.....\$	13.45	0.00
Remaining Counties.....\$	13.47	0.00
POWER EQUIPMENT OPERATOR:		
(EXCAVATOR)		
Chase, Lyon, Ottawa, Saline.\$	17.21	2.32
Finney, Kearny.....\$	17.05	2.25
Remaining Counties.....\$	17.00	2.19
POWER EQUIPMENT OPERATOR:		
(FRONT END LOADER)		
Cowley.....\$	12.72	0.00
Ellsworth.....\$	14.07	0.00
Gray.....\$	13.85	0.00
Remaining Counties.....\$	12.50	0.00
Trego.....\$	12.92	0.00
POWER EQUIPMENT OPERATOR:		
(MECHANIC)		
Ellsworth.....\$	19.79	0.00
Remaining Counties.....\$	18.65	0.00
POWER EQUIPMENT OPERATOR:		
(MOTOR GRADER-FINISH)		
Chase, Lyon, Ottawa, Saline.\$	17.23	2.18
Gray.....\$	18.67	1.56
Remaining Counties.....\$	16.82	1.95
POWER EQUIPMENT OPERATOR:		
(MOTOR GRADER-ROUGH)		
Chase, Finney, Kearny, Lyon, Ottawa, Saline.....\$	15.77	1.84
Remaining Counties.....\$	15.58	1.67
POWER EQUIPMENT OPERATOR:		
(MOTOR SCRAPER)		
Chase, Lyon, Ottawa, Saline.\$	14.11	1.04
Finney, Kearny.....\$	13.85	0.00
Remaining Counties.....\$	13.87	0.00
POWER EQUIPMENT OPERATOR:		
(PAVING MARKING).....\$	19.93	4.49
POWER EQUIPMENT OPERATOR:		
(ROLLER COMPACTOR)		
Chase, Lyon.....\$	15.48	0.00
Cowley.....\$	13.01	0.00
Ellsworth.....\$	13.37	0.00
Finney, Kearny, Mcpherson...\$	12.27	0.00
Ford.....\$	11.92	0.00

Gray.....	\$ 13.71	0.00
Kingman.....	\$ 13.04	0.00
Ottawa, Saline.....	\$ 14.92	0.00
Remaining Counties.....	\$ 11.75	0.00
Thomas.....	\$ 12.20	0.00
Trego.....	\$ 11.66	0.00
POWER EQUIPMENT OPERATOR:		
(ROTARY BROOM)		
Finney, Kearny.....	\$ 10.71	0.00
Marshall.....	\$ 11.98	0.00
Mcperson.....	\$ 12.34	0.00
Remaining Counties.....	\$ 10.25	0.00
Sherman.....	\$ 12.62	0.00
POWER EQUIPMENT OPERATOR:		
(ROTOMILL)		
Chase, Finney, Kearny,		
Lyon, Ottawa, Saline.....	\$ 16.15	0.00
Remaining Counties.....	\$ 16.09	0.00
POWER EQUIPMENT OPERATOR:		
(SKIDSTEER LOADER)		
Chase, Lyon, Ottawa, Saline.	\$ 16.62	3.62
Finney, Kearny.....	\$ 14.68	0.00
Remaining Counties.....	\$ 14.60	0.00
Sherman.....	\$ 13.12	1.34
POWER EQUIPMENT OPERATOR:		
(SPREADER BOX SELF-PROPELLED)		
Chase, Lyon, Ottawa, Saline.	\$ 12.91	0.00
Finney, Kearny.....	\$ 12.99	0.00
Remaining Counties.....	\$ 13.07	0.00
POWER EQUIPMENT OPERATOR:		
(TRACTOR)		
Chase, Lyon, Ottawa, Saline.	\$ 13.49	0.00
Cowley.....	\$ 11.57	0.00
Finney, Kearny.....	\$ 13.45	0.00
Kingman.....	\$ 13.25	0.00
Meade.....	\$ 12.94	0.00
Remaining Counties.....	\$ 13.50	0.00
Serviceman (equipment).....	\$ 16.33	1.74
TRUCK DRIVER (HEAVY DUTY,		
OFF-ROAD)		
Chase, Lyon, Ottawa, Saline.	\$ 15.10	0.00
Finney, Kearny.....	\$ 15.26	0.00
Remaining Counties.....	\$ 15.78	0.00
TRUCK DRIVER (SINGLE AXLE)		
Chase, Lyon, Ottawa, Saline.	\$ 15.15	0.00
Coffey.....	\$ 17.50	2.80
Finney, Kearny.....	\$ 15.13	0.00
Remaining Counties.....	\$ 15.10	0.00
TRUCK DRIVER (TANDEM)		
Chase.....	\$ 13.53	0.00
Finney, Kearny.....	\$ 14.39	0.00

Ford.....	\$ 13.96	0.00
Gray.....	\$ 13.50	0.00
Kingman.....	\$ 14.56	1.45
Lyon.....	\$ 13.73	0.00
Ottawa, Saline.....	\$ 13.57	0.00
Remaining Counties.....	\$ 12.97	0.00
Reno.....	\$ 13.75	0.00
Sherman.....	\$ 13.35	0.00
Washington.....	\$ 13.55	0.00

TRUCK DRIVER (TRIPLE AXLE and SEMI)

Chase, Lyon.....	\$ 17.56	0.00
Finney, Kearny.....	\$ 14.49	0.00
Gray.....	\$ 16.09	1.12
Ottawa, Saline.....	\$ 17.09	0.00
Remaining Counties.....	\$ 14.48	0.00
Reno.....	\$ 16.09	8.51
Sherman.....	\$ 15.87	2.49

WELDERS - Receive rate prescribed for craft performing operation to which welding is incidental.

Note: Executive Order (EO) 13706, Establishing Paid Sick Leave for Federal Contractors applies to all contracts subject to the Davis-Bacon Act for which the contract is awarded (and any solicitation was issued) on or after January 1, 2017. If this contract is covered by the EO, the contractor must provide employees with 1 hour of paid sick leave for every 30 hours they work, up to 56 hours of paid sick leave each year. Employees must be permitted to use paid sick leave for their own illness, injury or other health-related needs, including preventive care; to assist a family member (or person who is like family to the employee) who is ill, injured, or has other health-related needs, including preventive care; or for reasons resulting from, or to assist a family member (or person who is like family to the employee) who is a victim of, domestic violence, sexual assault, or stalking. Additional information on contractor requirements and worker protections under the EO is available at www.dol.gov/whd/govcontracts.

Unlisted classifications needed for work not included within the scope of the classifications listed may be added after award only as provided in the labor standards contract clauses (29CFR 5.5 (a) (1) (ii)).

The body of each wage determination lists the classification and wage rates that have been found to be prevailing for the cited type(s) of construction in the area covered by the wage determination. The classifications are listed in alphabetical order of "identifiers" that indicate whether the particular rate is a union rate (current union negotiated rate for local), a survey rate (weighted average rate) or a union average rate

(weighted union average rate).

Union Rate Identifiers

A four letter classification abbreviation identifier enclosed in dotted lines beginning with characters other than "SU" or "UAVG" denotes that the union classification and rate were prevailing for that classification in the survey. Example: PLUM0198-005 07/01/2014. PLUM is an abbreviation identifier of the union which prevailed in the survey for this classification, which in this example would be Plumbers. 0198 indicates the local union number or district council number where applicable, i.e., Plumbers Local 0198. The next number, 005 in the example, is an internal number used in processing the wage determination. 07/01/2014 is the effective date of the most current negotiated rate, which in this example is July 1, 2014.

Union prevailing wage rates are updated to reflect all rate changes in the collective bargaining agreement (CBA) governing this classification and rate.

Survey Rate Identifiers

Classifications listed under the "SU" identifier indicate that no one rate prevailed for this classification in the survey and the published rate is derived by computing a weighted average rate based on all the rates reported in the survey for that classification. As this weighted average rate includes all rates reported in the survey, it may include both union and non-union rates. Example: SULA2012-007 5/13/2014. SU indicates the rates are survey rates based on a weighted average calculation of rates and are not majority rates. LA indicates the State of Louisiana. 2012 is the year of survey on which these classifications and rates are based. The next number, 007 in the example, is an internal number used in producing the wage determination. 5/13/2014 indicates the survey completion date for the classifications and rates under that identifier.

Survey wage rates are not updated and remain in effect until a new survey is conducted.

Union Average Rate Identifiers

Classification(s) listed under the UAVG identifier indicate that no single majority rate prevailed for those classifications; however, 100% of the data reported for the classifications was union data. EXAMPLE: UAVG-OH-0010 08/29/2014. UAVG indicates that the rate is a weighted union average rate. OH indicates the state. The next number, 0010 in the example, is an internal number used in producing the wage determination. 08/29/2014 indicates the survey completion date for the classifications and rates under that identifier.

A UAVG rate will be updated once a year, usually in January of each year, to reflect a weighted average of the current negotiated/CBA rate of the union locals from which the rate is based.

WAGE DETERMINATION APPEALS PROCESS

1.) Has there been an initial decision in the matter? This can be:

- * an existing published wage determination
- * a survey underlying a wage determination
- * a Wage and Hour Division letter setting forth a position on a wage determination matter
- * a conformance (additional classification and rate) ruling

On survey related matters, initial contact, including requests for summaries of surveys, should be with the Wage and Hour Regional Office for the area in which the survey was conducted because those Regional Offices have responsibility for the Davis-Bacon survey program. If the response from this initial contact is not satisfactory, then the process described in 2.) and 3.) should be followed.

With regard to any other matter not yet ripe for the formal process described here, initial contact should be with the Branch of Construction Wage Determinations. Write to:

Branch of Construction Wage Determinations
Wage and Hour Division
U.S. Department of Labor
200 Constitution Avenue, N.W.
Washington, DC 20210

2.) If the answer to the question in 1.) is yes, then an interested party (those affected by the action) can request review and reconsideration from the Wage and Hour Administrator (See 29 CFR Part 1.8 and 29 CFR Part 7). Write to:

Wage and Hour Administrator
U.S. Department of Labor
200 Constitution Avenue, N.W.
Washington, DC 20210

The request should be accompanied by a full statement of the interested party's position and by any information (wage payment data, project description, area practice material, etc.) that the requestor considers relevant to the issue.

3.) If the decision of the Administrator is not favorable, an interested party may appeal directly to the Administrative Review Board (formerly the Wage Appeals Board). Write to:

Administrative Review Board
U.S. Department of Labor
200 Constitution Avenue, N.W.
Washington, DC 20210

4.) All decisions by the Administrative Review Board are final.
=====

END OF GENERAL DECISION

**KANSAS DEPARTMENT OF TRANSPORTATION
SPECIAL PROVISION TO THE
STANDARD SPECIFICATIONS, EDITION 2015**

COMBINATION, TIED BIDS ON 1R PROJECTS WITH FEDERAL-AID FUNDS

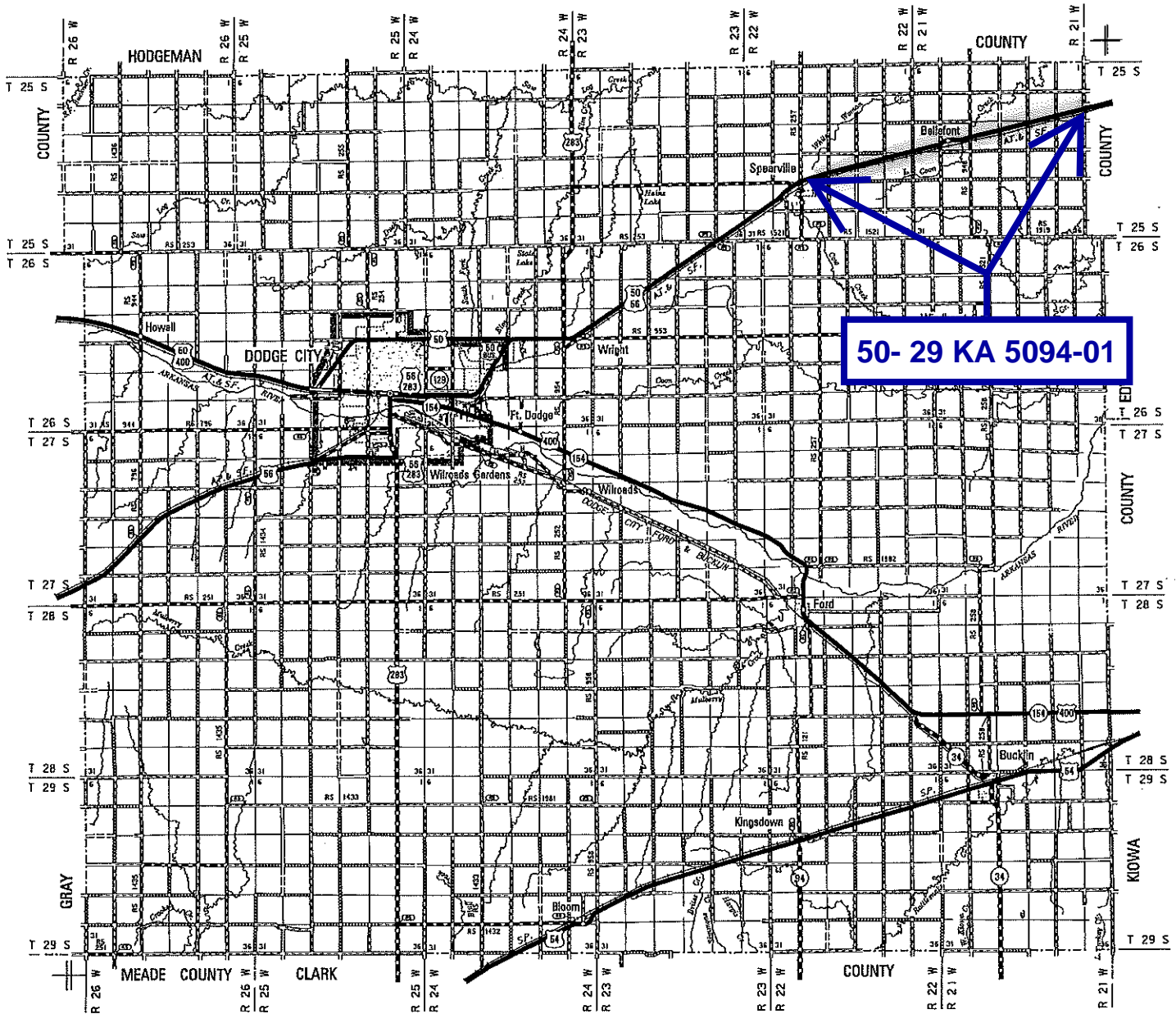
SECTION 102

BIDDING REQUIREMENTS AND CONDITIONS

Page 100-13, subsection 102.5. Delete subsection 102.5a.(2)(f) and replace with the following:

(f) Kansas-funded state projects “tied to” Federal-Aid funded state projects and Kansas-funded state projects “tied with” Federal-Aid funded state projects.

10-10-17 C&M
Oct-17 Letting



50-29 KA 5094-01

LEGEND

ROADS AND ROADWAY FEATURES

Primitive Road (Type A)	-----
Unimproved Road (Type B)	-----
Gravel and Gravel Road (Type C)	-----
Bituminous Road (Type D)	-----
Gravel or Stone Road - Not Graded or Ditched (Type E-1)	-----
Gravel or Stone Road - Graded and Ditched (Type E-2)	-----
Gravel or Stone Road With Bituminous Surface (Type E-3)	-----
Bituminous Road - Low Type (Type F-1, F-2, F-3)	-----
Paved Road (Type G-1, G-2, G-3, G-4)	-----
Ditched Highway	-----
Highway With Full Control of Access and Interchanges	-----

ROAD SYSTEM DESIGNATION

Rural Elementary System	RS
Interstate Numbered Highway	
U.S. Numbered Highway	
State Highway System or State Numbered Highway	
End of Designated System or Marked Route	-----
Kansas Territory Authority	



**GENERAL HIGHWAY MAP
FORD COUNTY
KANSAS**

PREPARED BY THE
KANSAS DEPARTMENT OF TRANSPORTATION
BUREAU OF TRANSPORTATION PLANNING
IN COOPERATION WITH THE
U.S. DEPARTMENT OF TRANSPORTATION
FEDERAL HIGHWAY ADMINISTRATION



AS SYSTEM REVISED TO JUNE 27, 1986

COMPUTER GENERATED



General Notes

8/7/2018

Page 1 of 1

Project No. 50 - 29 KA 5094-01

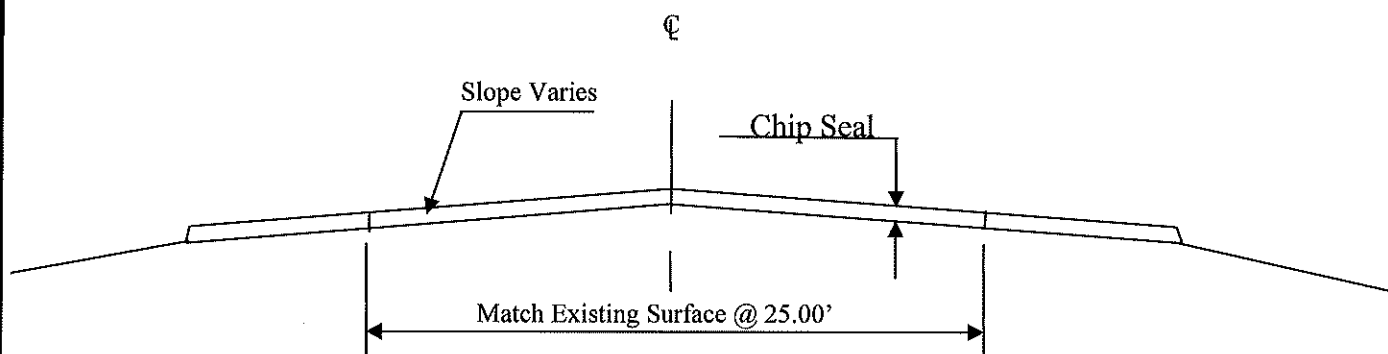
Note

- 1 Permanent Striping to be done by KDOT.

- 2 The contractor is responsible for establishing and maintaining centerline of the traveled way for the duration of the project. Splitting the traveled way with a tape measure is an acceptable technique to establish centerline. This work is considered subsidiary to other items in the contract.

- 3 Rumble strips are to be installed prior to chip seal.

TYPICAL SECTION



not to scale

ROADWAY WIDTHS

Location	Miles	Approx. Width	Location	Miles	Approx. Width
Roadway					
Begin @ Existing Header East of Spearville, thence East to Ford/Edward County Line	9.440	25.00'			
Widen(s)					
RP 142.59 to 142.76 RT	0.1700	11.50'			
RP 142.47 to 142.57 LT	0.1000	11.50'			
RP 143.43 to 143.58 RT	0.1700	11.50'			
RP 143.47 to 143.64 LT	0.1700	11.50'			

RATE OF APPLICATION

Cover Material (CM-L-2) @ **0.0082** cuyd/sqyd

Emulsified Asphalt (CRS-1HP) @ **0.42** gal/sqyd X 8.35 #gal

	Date: 8/3/2018	KANSAS DEPARTMENT OF TRANSPORTATION
FORD Co.	PROJ. NO. 50-29-KA- 5094 -01	TITLE: CHIPSEAL

GENERAL NOTES

Construction of centerline rumble strips in asphalt pavement is paid under the bid item "Rumble Strips (Milled) (Centerline)". All work and materials required to construct the strips in accordance to these details and Special Provisions are included in this item.

See typical sections for other surfacing details.

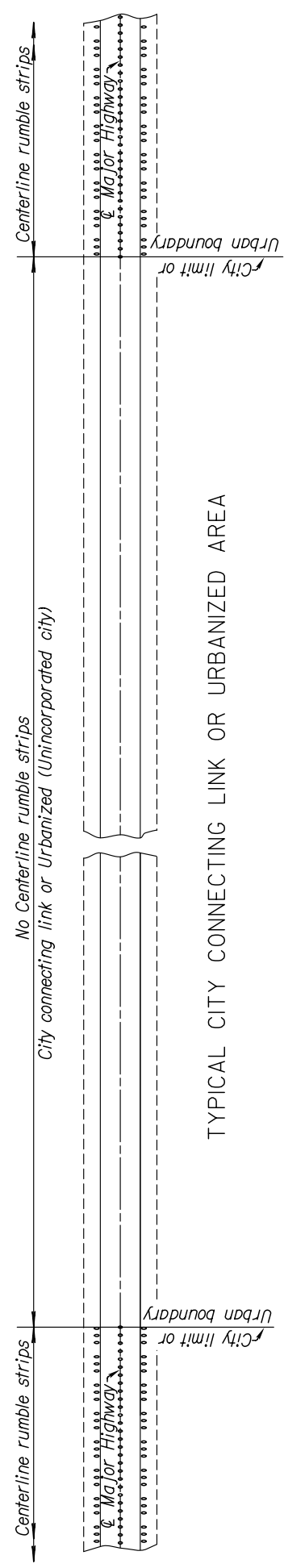
Do not construct rumble strip on bridges or concrete bridge approaches.

No variation in spacing between depressions will be permitted.

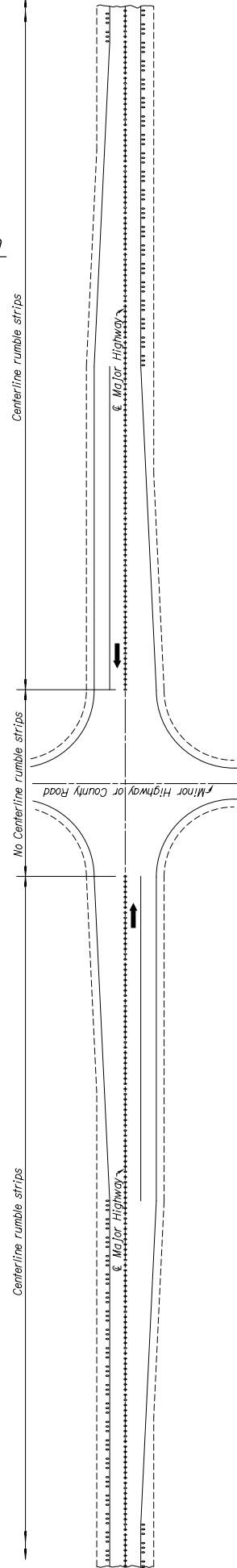
Either rumble strip shape is acceptable with no mixing of shapes on a project unless approved by the engineer.

For Shoulder Rumble Strip details see Standard drawing RD707.

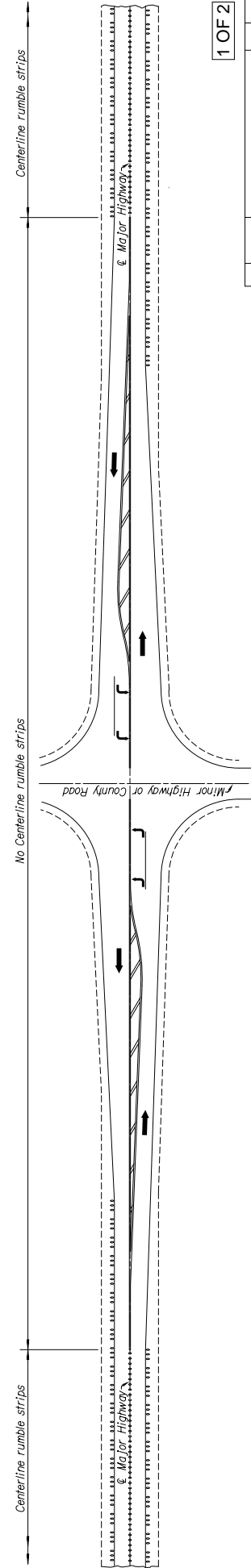
50-29-KA- 5094 -01



TYPICAL CITY CONNECTING LINK OR URBANIZED AREA



TYPICAL RURAL INTERSECTION WITH BYPASS LANES



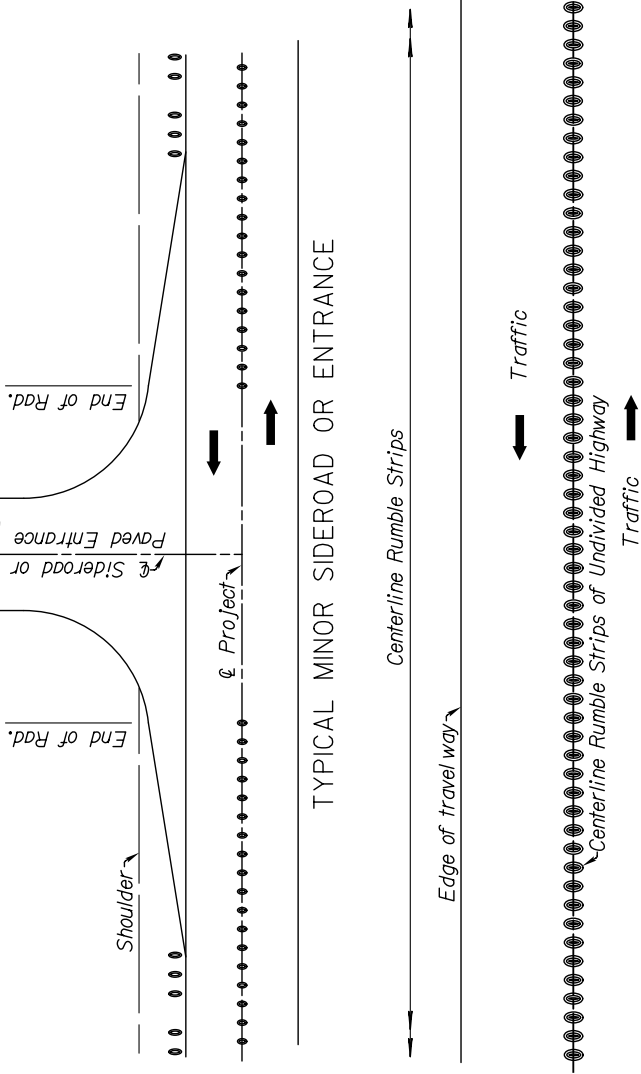
TYPICAL RURAL INTERSECTION WITH LEFT TURN LANES

1 OF 2

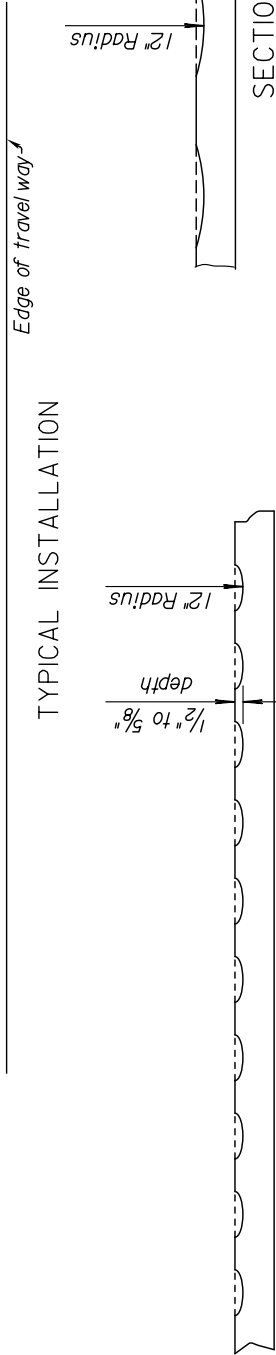
NO.	DATE	REVISIONS	BY	APP'D
2	11-15-11	Revised notes	S.W.K.	J.O.B.
1	9-24-09	Rev. & rumble strips thru so. rd.	S.W.K.	J.O.B.

KANSAS DEPARTMENT OF TRANSPORTATION
MILLED RUMBLE STRIPS (CENTERLINE)

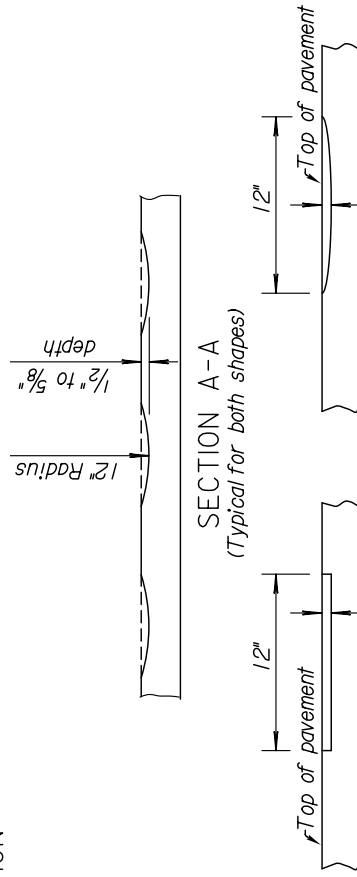
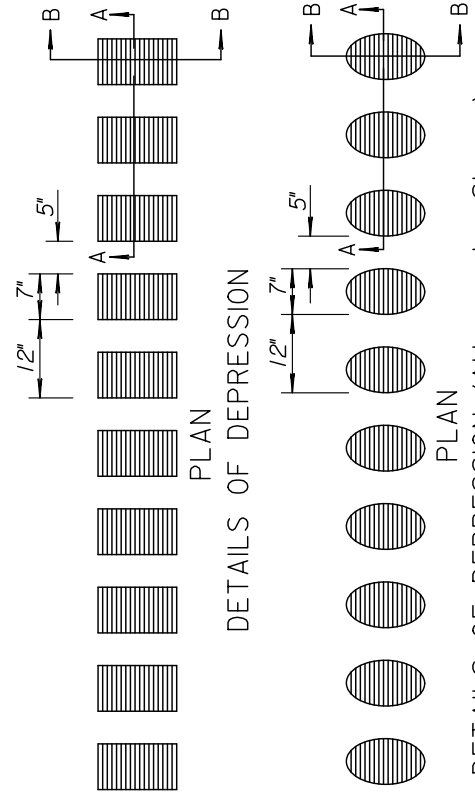
RD706
 FINA. APPROVAL: 5-26-11 JIMMIE O. BRANN
 DESIGNER: JAMES W. HANCOCK
 CHECKER: JAMES W. HANCOCK
 DRAWN BY: JAMES W. HANCOCK
 KDOT Graphics Certified 07-09-2015



TYPICAL INSTALLATION

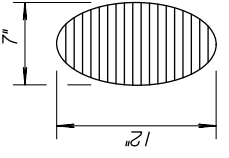


ELEVATION



SECTION B-B

SECTION B-B (ALT. SHAPE)



2 OF 2

NO.	DATE	REVISIONS	BY	APP'D
2	11-15-10	Revised notes	S.W.K.	J.O.B.
1	9-24-09	Rem & rumble strips thru grad.	S.W.K.	J.O.B.
DESIGN OK.		QUANTITY	PRICE	CK. K.O.P.
CHECK OK.		DATE	BY	APP'D
KANSAS DEPARTMENT OF TRANSPORTATION				
MILLED RUMBLE STRIPS (CENTERLINE)				
RD706				
APPROVAL	5-28-11	DESIGN OK.	DETAIL OK.	QUANTITY OK.
DESIGN OK.	5-28-11	PRICE OK.	DATE	BY
DESIGN OK.	5-28-11	PRICE OK.	DATE	BY

ALT. RUMBLE STRIP SHAPE

**SUMMARY OF TRAFFIC CONTROL DEVICES
(FOR INFORMATION ONLY)**

All traffic control devices shall be placed in accordance with the applicable KDOT Traffic Control Standards. The contractor shall provide all signs and other traffic control devices for proper traffic control of all construction activities. Quantities listed are estimates only. Contractor operations may require additional signs and traffic control devices, this will be subsidiary to the bid item traffic control.

WORK ZONE SIGNS *			
SIGN NO.	SIZE - SQ. FT.		
	0-9.25	9.26-16.25	16.26 & OVER
R2-1	4		
R4-1	2		
W3-4		2	
W3-5		2	
W8-11			
W14-3		2	
W20-1		2	
W20-4		2	
W20-5			
W20-7		4	
W21-5			
W8-15		2	
W8-15P	2		
G20-4			
KG20-2	4		
KM4-20	2		
KG-20-5	2		
KI-104a			
KI-105a			

LIGHTED DEVICES *	
WORK ZONE WARNING LIGHT (TYPE "A" LOW INTENSITY)	
WORK ZONE WARNING LIGHT (RED TYPE "B" HIGH INTENSITY)	
ARROW DISPLAY	
PORTABLE CHANGEABLE MESSAGE SIGN	

BARRICADES *		CHANNELIZING DEVICES *		
TYPE III (4' TO 12')	PEDESTRIAN	FIXED	PORTABLE	PEDESTRIAN
			160	

**SUMMARY OF TRAFFIC CONTROL DEVICES
(EACH)**

WORK ZONE SIGN (SPECIAL)		
SIGN NO.	16.25 SQ. FT. & LESS	16.26 SQ. FT. & OVER

RECAPITULATION OF QUANTITIES

ITEM	QUANTITY	UNIT
WORK ZONE SIGNS (0 TO 9.25 SQ. FT.)		EADA
WORK ZONE SIGNS (9.26 TO 16.25 SQ. FT.)		EADA
WORK ZONE SIGNS (16.26 SQ. FT. & OVER)		EADA
WORK ZONE BARRICADES (TYPE 3 - 4' TO 12')		EADA
WORK ZONE BARRICADES (PEDESTRIAN)		EADA
CHANNELIZER (FIXED)		EADA
CHANNELIZER (PORTABLE)		EADA
CHANNELIZER (PEDESTRIAN)		EADA
WORK ZONE WARNING LIGHT (TYPE "A" LOW INTENSITY)		EADA
WORK ZONE WARNING LIGHT (RED TYPE "B" HIGH INTENSITY)		EADA
ARROW DISPLAY		EADA
PORTABLE CHANGEABLE MESSAGE SIGN		EADA
PAVEMENT MARKING (TEMPORARY)		
4" SOLID (TYPE I)		STA./LINE
4" SOLID (TYPE II)		STA./LINE
4" BROKEN (8")(TYPE I)		STA./LINE
4" BROKEN (8")(TYPE II)		STA./LINE
4" BROKEN (3")(TYPE I)		STA./LINE
4" BROKEN (3")(TYPE II)		STA./LINE
4" DOTTED EXTENSION (TYPE I)		STA./LINE
4" DOTTED EXTENSION (TYPE II)		STA./LINE
SOLID (LINE MASKING TAPE)		STA./LINE
BROKEN (LINE MASKING TAPE)		STA./LINE
SYMBOL (TYPE I)		EACH
SYMBOL (TYPE II)		EACH
FLEXIBLE RAISED PAVEMENT MARKERS (4" BROKEN (8'))		STA./LINE
FLEXIBLE RAISED PAVEMENT MARKERS (4" BROKEN (3'))	498.4	STA./LINE
PAVEMENT MARKING REMOVAL		LIN. FT.
CONCRETE SAFETY BARRIER (TYPE F3) (TEMPORARY)		LIN. FT.
CONCRETE SAFETY BARRIER (TYPE F3) (TEMP.-INSTALL ONLY)		LIN. FT.
CONCRETE SAFETY BARRIER (TYPE F3) (TEMP.-RELOCATE)		LIN. FT.
INERTIAL BARRIER SYSTEM		EACH
REPLACEMENT MODULES (IBS)		EACH
WORK ZONE SIGN (SPECIAL) (16.25 SQ. FT. & LESS)		EACH
WORK ZONE SIGN (SPECIAL) (16.26 SQ. FT. & OVER)		EACH
RIGID RAISED PAVEMENT MARKER (TYPE I)		EACH
RIGID RAISED PAVEMENT MARKER (TYPE II)		EACH
TRAFFIC SIGNAL INSTALLATION (TEMPORARY)		LUMP SUM
TRAFFIC CONTROL (INITIAL SET UP)		LUMP SUM
TRAFFIC CONTROL	LUMPSUM	LUMP SUM
FLAGGER (SET PRICE)	1	HOURLY

NOTES:

3				
2				
1	11/10/16	Removed Replacement Modules Summary Table, Added "(IBS)" to Replacement Modules description	JGB	
NO.	DATE	REVISIONS	BY	APP'D
KANSAS DEPARTMENT OF TRANSPORTATION				
TRAFFIC CONTROL SUMMARY OF DEVICES RECAPITULATION OF QUANTITIES				
TE795				
FHWA APPROVAL	08/01/15	APP'D	Kirstina Erickson	
DESIGNED	B.A.H.	DETAILED	R.W.B.	QUANTITIES TRACED