

HOST 106 KA 4888-01

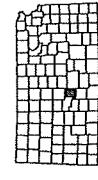
- BOUNDARIES**
- County Boundary
  - State Boundary
  - Kansas Turnpike Authority
  - Highway First Boundary
  - Indian Reservation or
  - Indian Land
  - Section Line
  - Unincorporated City Line
  - Urban Area
- CITIES OR TOWNS**
- State Capital
  - County Seat
  - Populated Place
  - Locals
- ROAD CLASSIFICATIONS**
- Kansas Turnpike (KTA)
  - Interstate
  - State Numbered Highway
  - State Route - Unimproved
  - State Route - Improved
  - State Road - Unimproved
  - State Road - Improved
  - Minor Road - Gravel
  - Minor Road - Other
  - Minor Road - Sid
  - Trail
  - Trail Secondary System
  - County Road System
  - End of Designated System
- ROAD SYSTEM DESIGNATION**
- Interstate
  - State Numbered Highway
  - County Road System
  - End of Designated System
- MAP SYMBOLS**
- Resubdivided
  - Interlocking
  - State System Bridge
  - Railroad
- DRAINAGE**
- Flow of Surface Drainage
  - Lake or Reservoir

GENERAL HIGHWAY MAP  
STAFFORD COUNTY  
KANSAS

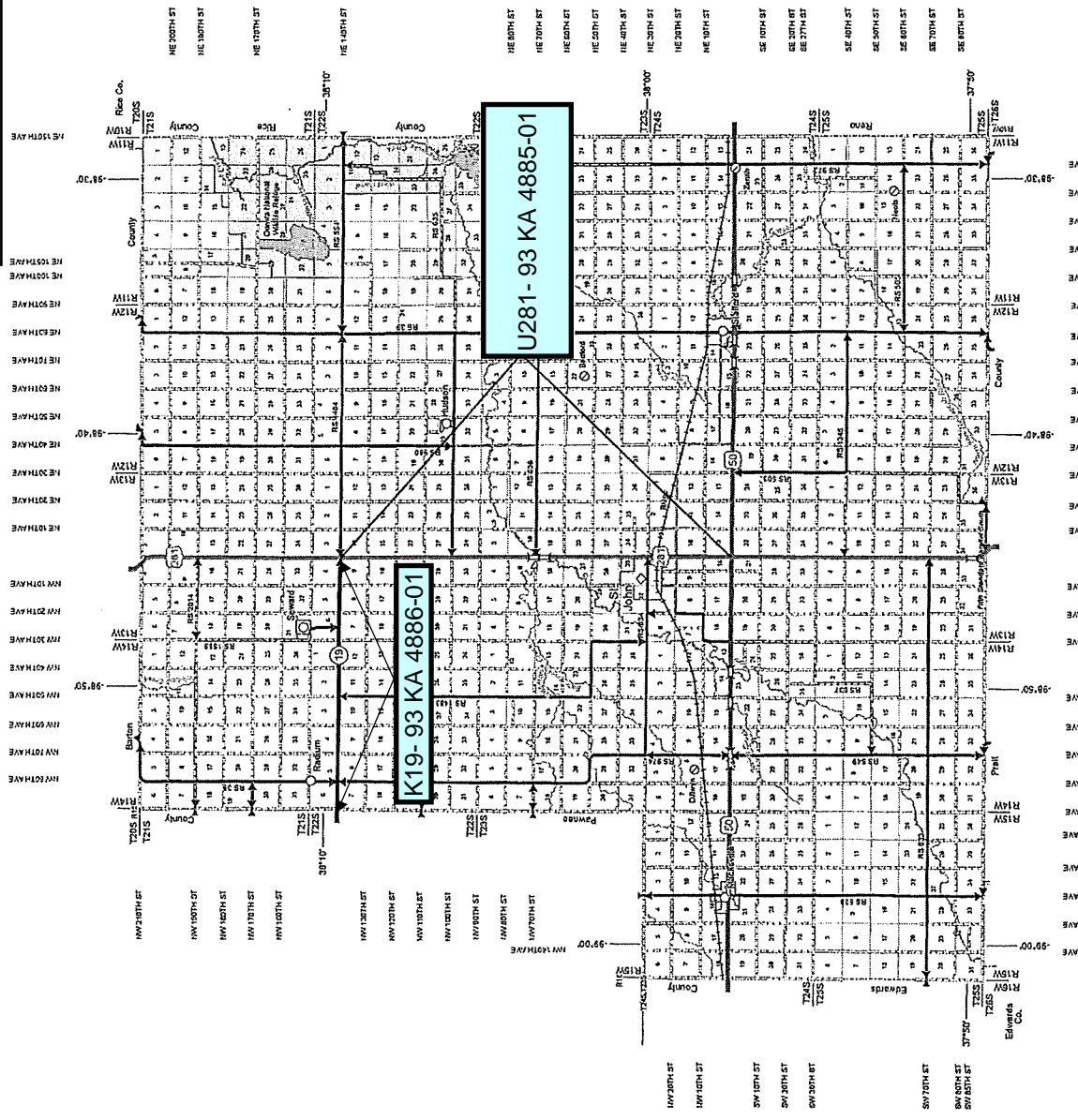
PREPARED BY THE  
KANSAS DEPARTMENT OF TRANSPORTATION  
BUREAU OF TRANSPORTATION PLANNING  
IN COOPERATION WITH THE  
U.S. DEPARTMENT OF TRANSPORTATION  
FEDERAL HIGHWAY ADMINISTRATION



MARCH 2019

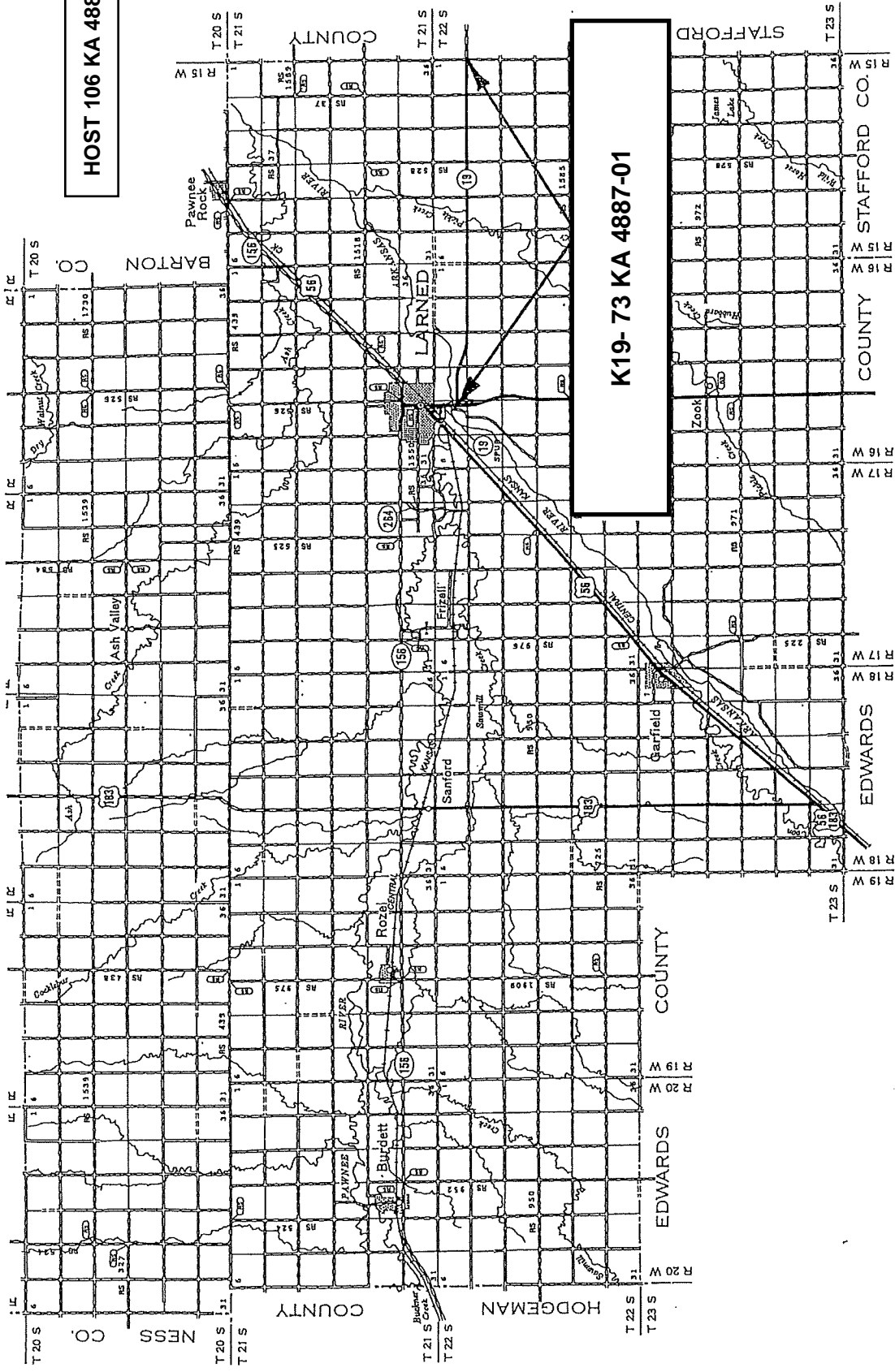


KDOT makes no warranties, guarantees, or representations for the accuracy of this information and assumes no liability for errors or omissions.



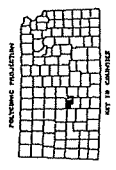
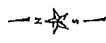
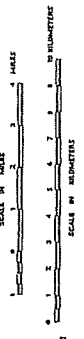
HOST 106 KA 4888-01

K19-73 KA 4887-01



GENERAL HIGHWAY MAP  
**PAWNEE COUNTY**  
 KANSAS

KANSAS DEPARTMENT OF TRANSPORTATION  
 BUREAU OF TRANSPORTATION PLANNING  
 IN COOPERATION WITH THE  
 U.S. DEPARTMENT OF TRANSPORTATION  
 FEDERAL HIGHWAY ADMINISTRATION



LEGEND

- ROADS AND ROADWAY FEATURES**
- Division Road (Type A)
  - Graded and Driveway Road (Type B)
  - Subsided Road (Type C)
  - Gravel or Stone Road - Not Graded or Driveway (Type D)
  - Gravel or Stone Road With Stabilized Surface (Type E)
  - Blindfold Road - Low Type (Type F, G, H, I)
  - Blindfold Road - High Type (Type J, K, L)
  - Divided Highway
  - Highway With Med-Controlled Access and Interchange
- ROAD SYSTEM DESIGNATION**
- State Highway System
  - Interstate Numbered Highway
  - U.S. Numbered Highway
  - State Highway System or State Numbered Highway
  - End of Designated System or Unlabeled Road
  - Kansas Turnpike Authority



## General Notes

3/28/2018

Page 1 of 1

---

**Project No.** 106 KA 4888-01

**Note**

- 1 The contractor shall recognize that the contract quantity of crack sealing is an estimate based on the condition of the roadway at the time the contract was prepared. The final quantity of crack sealing will be determined in the field at the time the work is accomplished. No adjustments of unit price for crack sealing will be made due to quantity fluctuations.
- 2 This project will require pilot car setup for traffic control.
  
- 3 Routing for crack sealing will not be allowed beyond what can be sealed during the next workday.

**SUMMARY OF TRAFFIC CONTROL DEVICES  
(FOR INFORMATION ONLY)**

All traffic control devices shall be placed in accordance with the applicable KDOT Traffic Control Standards. The contractor shall provide all signs and other traffic control devices for proper traffic control of all construction activities. Quantities listed are estimates only. Contractor operations may require additional signs and traffic control devices, this will be subsidiary to the bid item traffic control.

WORK ZONE SIGNS *			
SIGN NO.	SIZE - SQ. FT.		
	0-9.25	9.26-16.25	16.26 & OVER
R2-1			
R4-1	2		
W3-4		2	
W3-5			
W8-11			
W14-3	2		
W20-1		2	
W20-4		2	
W20-5			
W20-7		2	
W21-5			
G20-4	1		
G20-5	8		
KM4-20			
KG20-2	2		
KI-104a			
KI-105a			

LIGHTED DEVICES *	
WORK ZONE WARNING LIGHT (TYPE "A" LOW INTENSITY)	
WORK ZONE WARNING LIGHT (RED TYPE "B" HIGH INTENSITY)	
ARROW DISPLAY	
PORTABLE CHANGEABLE MESSAGE SIGN	

BARRICADES *		CHANNELIZING DEVICES *		
TYPE III (4' TO 12')	PEDESTRIAN	FIXED	PORTABLE	PEDESTRIAN
			34	

**SUMMARY OF TRAFFIC CONTROL DEVICES  
(EACH)**

WORK ZONE SIGN (SPECIAL)		
SIGN NO.	16.25 SQ. FT. & LESS	16.26 SQ. FT. & OVER

**RECAPITULATION OF QUANTITIES**

ITEM	QUANTITY	UNIT
WORK ZONE SIGNS (0 TO 9.25 SQ. FT.)		EADA
WORK ZONE SIGNS (9.26 TO 16.25 SQ. FT.)		EADA
WORK ZONE SIGNS (16.26 SQ. FT. & OVER)		EADA
WORK ZONE BARRICADES (TYPE 3 - 4' TO 12')		EADA
WORK ZONE BARRICADES (PEDESTRIAN)		EADA
CHANNELIZER (FIXED)		EADA
CHANNELIZER (PORTABLE)		EADA
CHANNELIZER (PEDESTRIAN)		EADA
WORK ZONE WARNING LIGHT (TYPE "A" LOW INTENSITY)		EADA
WORK ZONE WARNING LIGHT (RED TYPE "B" HIGH INTENSITY)		EADA
ARROW DISPLAY		EADA
PORTABLE CHANGEABLE MESSAGE SIGN		EADA
PAVEMENT MARKING (TEMPORARY)		
4" SOLID (TYPE I)		STA./LINE
4" SOLID (TYPE II)		STA./LINE
4" BROKEN (8")(TYPE I)		STA./LINE
4" BROKEN (8")(TYPE II)		STA./LINE
4" BROKEN (3")(TYPE I)		STA./LINE
4" BROKEN (3")(TYPE II)		STA./LINE
4" DOTTED EXTENSION (TYPE I)		STA./LINE
4" DOTTED EXTENSION (TYPE II)		STA./LINE
SOLID (LINE MASKING TAPE)		STA./LINE
BROKEN (LINE MASKING TAPE)		STA./LINE
SYMBOL (TYPE I)		EACH
SYMBOL (TYPE II)		EACH
FLEXIBLE RAISED PAVEMENT MARKERS (4" BROKEN (8"))		STA./LINE
FLEXIBLE RAISED PAVEMENT MARKERS (4" BROKEN (3"))		STA./LINE
PAVEMENT MARKING REMOVAL		LIN. FT.
CONCRETE SAFETY BARRIER (TYPE F3) (TEMPORARY)		LIN. FT.
CONCRETE SAFETY BARRIER (TYPE F3) (TEMP.-INSTALL ONLY)		LIN. FT.
CONCRETE SAFETY BARRIER (TYPE F3) (TEMP.-RELOCATE)		LIN. FT.
INERTIAL BARRIER SYSTEM		EACH
REPLACEMENT MODULES (IBS)		EACH
WORK ZONE SIGN (SPECIAL) (16.25 SQ. FT. & LESS)		EACH
WORK ZONE SIGN (SPECIAL) (16.26 SQ. FT. & OVER)		EACH
RIGID RAISED PAVEMENT MARKER (TYPE I)		EACH
RIGID RAISED PAVEMENT MARKER (TYPE II)		EACH
TRAFFIC SIGNAL INSTALLATION (TEMPORARY)		LUMP SUM
TRAFFIC CONTROL (INITIAL SET UP)		LUMP SUM
TRAFFIC CONTROL	LUMPSUM	LUMP SUM
FLAGGER (SET PRICE)	1	HOUR

NOTES:

3				
2				
1	11/10/16	Removed Replacement Modules Summary Table, Added "(IBS)" to Replacement Modules description	JGB	
NO.	DATE	REVISIONS	BY	APP'D
KANSAS DEPARTMENT OF TRANSPORTATION				
<b>TRAFFIC CONTROL SUMMARY OF DEVICES RECAPITULATION OF QUANTITIES</b>				
<b>TE795</b>				
DESIGNED	B.A.H.	DATE	06/01/15	APP'D Kristina Erickson
DESIGN CK.		DETAIL CK.	R.W.B.	QUANTITIES TRACED
			QUAN. CK.	TRACE CK.

Stafford Co. & Pawnee Co.

Proj. No. 106 KA 4888-01

Title: Crack Seal