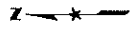


283-106 M 0063-01

- HIGHWAY MARKERS**
- Interstate Numbered Highway
 - Kansas Turnpike Authority
 - U.S. Numbered Highway
 - State Numbered Highway
- HIGHWAY CLASSIFICATIONS**
- Interstate
 - Kansas Turnpike (KTA)
 - Controlled Access
 - US Route - Divided
 - US Route - Undivided
 - State Route - Divided
 - State Route - Undivided
 - Local Road - Divided
 - Local Road - Undivided
 - US Route - Paved
 - US Route - Unpaved
 - Minor Road - Paved
 - Minor Road - Gravel
 - Minor Road - Soil
 - County Road System
 - City Road System
 - Dir of Designated System
- BOUNDARIES**
- County Boundary
 - State Boundary
 - Military Fort Boundary
 - Indian Reservation or National Park Boundary
 - Section Line
 - Park or Wildlife Area
 - Unincorporated City Limit
 - Urban Area
- CITIES OR TOWNS**
- State Capital
 - County Seat
 - Populated Place
 - Locate
- DEMLINEAGE**
- Power or Major Drainage
 - Lake or Reservoir
- MAP SYMBOLS**
- Roadcut
 - Interchange
 - State System Bridge
 - Railroad

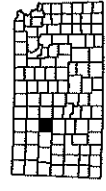


GENERAL HIGHWAY MAP TREGO COUNTY KANSAS

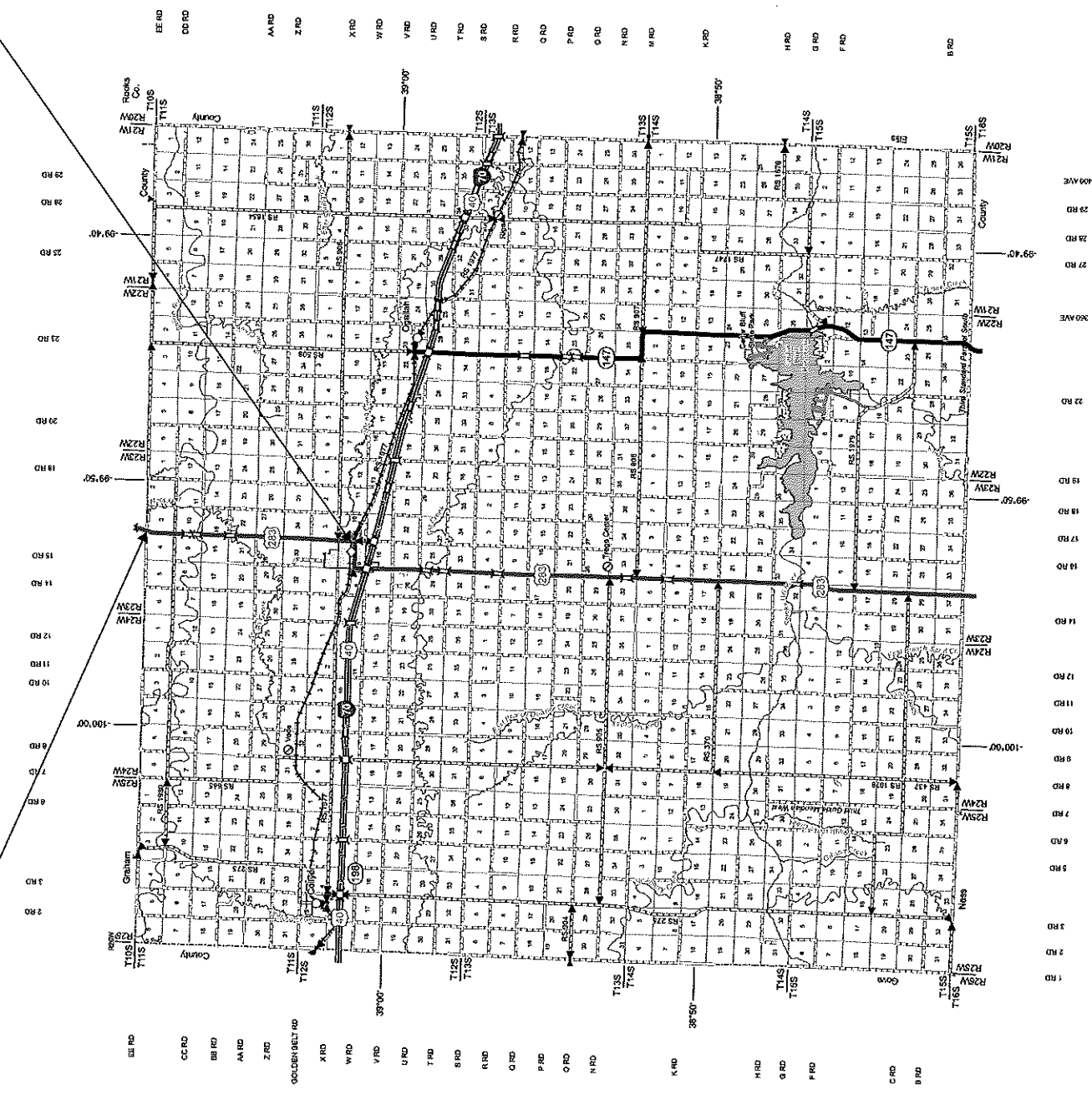
PREPARED BY THE
KANSAS DEPARTMENT OF TRANSPORTATION
BUREAU OF TRANSPORTATION PLANNING
IN COOPERATION WITH THE
U.S. DEPARTMENT OF TRANSPORTATION
FEDERAL HIGHWAY ADMINISTRATION



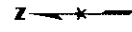
MARCH 2016



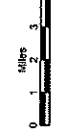
KDOT makes no warranties, guarantees, or representations for the accuracy of this information and assumes no liability for errors or omissions.



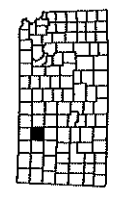
- HIGHWAY MARKERS**
- Interstate Numbered Highway
 - Kansas Turnpike Authority
 - U.S. Numbered Highway
 - State Numbered Highway
- BOUNDARIES**
- County Boundary
 - State Boundary
 - Military Fort Boundary
 - Indian Reservation or Indian Land
 - Section Line
 - Park or Wildlife Area
 - Incorporated City Limit
 - Urban Area
- CITIES OR TOWNS**
- State Capital
 - County Seat
 - Proposed Place
 - Locals
- ROAD CLASSIFICATIONS**
- US Route - Unimproved
 - State Route - Unimproved
 - State Route - Improved
 - RS Route - Paved
 - RS Route - Unpaved
 - Minor Road - Paved
 - Minor Road - Gravel
 - Minor Road - Soil
- ROAD SYSTEM DESIGNATION**
- Road Secondary System
 - County Road System
 - State System Bridge
 - End of Designated System
- DRAINAGE**
- Run or Major Drainage
 - Lake or Reservoir
- MAP SYMBOLS**
- Roundabout
 - State System Bridge
 - Railroad



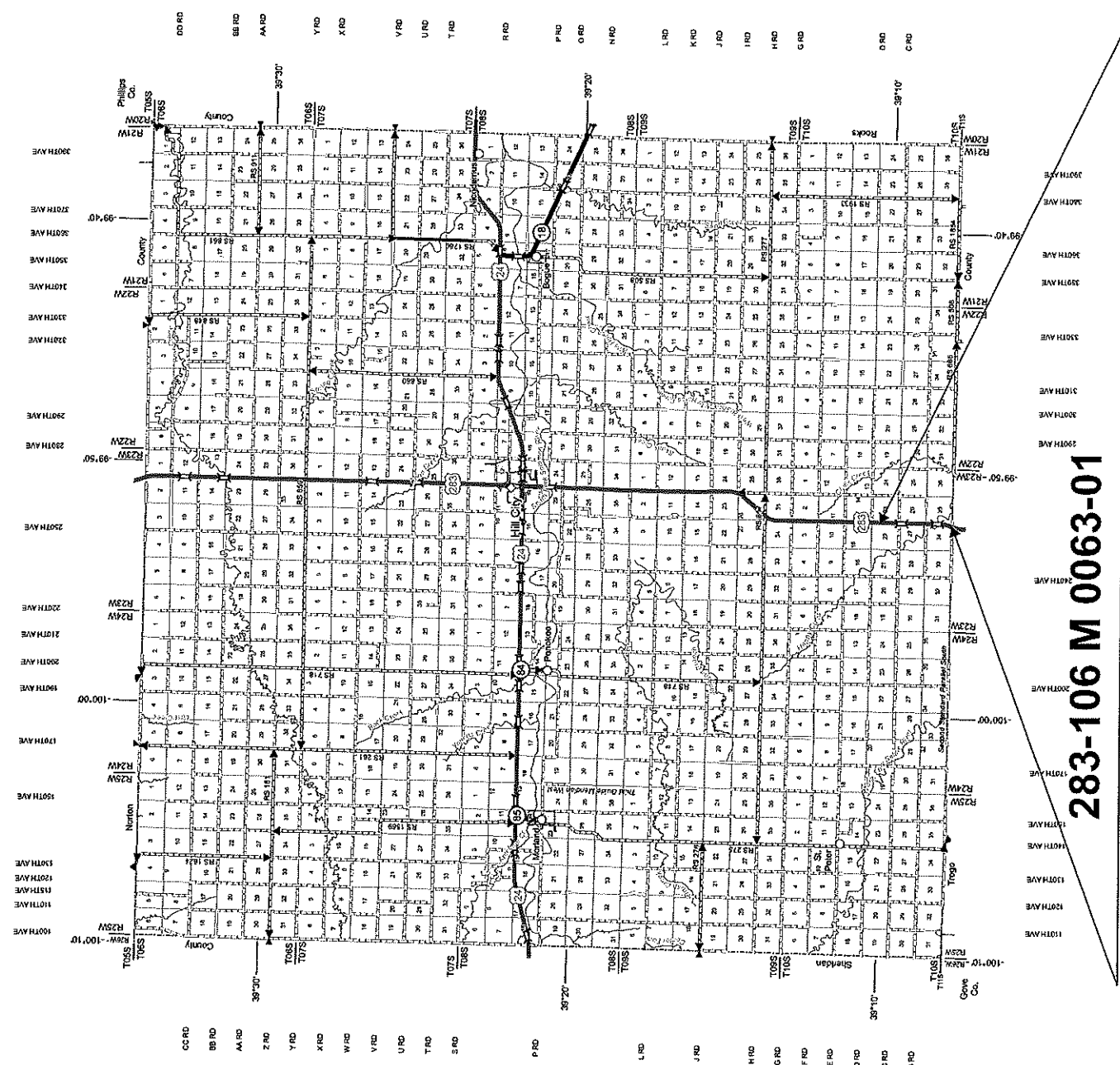
GENERAL HIGHWAY MAP
GRAHAM COUNTY
 KANSAS
 PREPARED BY THE
KANSAS DEPARTMENT OF TRANSPORTATION
BUREAU OF TRANSPORTATION PLANNING
 IN COOPERATION WITH THE
U.S. DEPARTMENT OF TRANSPORTATION
FEDERAL HIGHWAY ADMINISTRATION



MARCH 2016



KDOT makes no warranties, guarantees, or representations for the accuracy of this information and assumes no liability for errors or omissions.



283-106 M 0063-01



Project No. 283 - 106 M 0063-01

Note

- 1 Commercial grade asphalt will be picked up during daily production.

- 2 K-DOT trucks will alternate with contractor's trucks to receive material.

- 3 Material will be picked up during regular hours of operation which are 7:00 AM to 5:00 PM, Monday - Friday.