

**50-29 KA 5094-01**

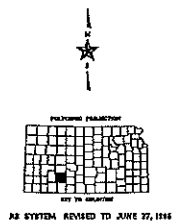
**LEGEND**

**ROADS AND ROADWAY FEATURES**

Primitive Road (Type A)	-----
Unimproved Road (Type B)	-----
Gravel and Gravel Road (Type C)	-----
Bit-Gravel Road (Type D)	-----
Gravel or Stone Road - Not Graded or Ditched (Type E-1)	-----
Gravel or Stone Road - Graded and Ditched (Type E-2)	-----
Gravel or Stone Road With Sealed Surface (Type E-3)	-----
Asphalt Road - Low Type (Type F-1, F-2, F-3)	-----
Paved Road (Type G-1, G-2, G-3, G-4)	-----
Ditched Highway	-----
Highway With Full Control of Access and Interchanges	-----

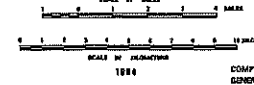
**ROAD SYSTEM DESIGNATION**

Rural Elementary System	RS
Interstate Numbered Highway	
U.S. Numbered Highway	
State Highway System or State Numbered Highway	
End of Designated System or Marked Route	
Kansas Territory Authority	



**GENERAL HIGHWAY MAP  
FORD COUNTY  
KANSAS**

PREPARED BY THE  
KANSAS DEPARTMENT OF TRANSPORTATION  
BUREAU OF TRANSPORTATION PLANNING  
IN COOPERATION WITH THE  
U.S. DEPARTMENT OF TRANSPORTATION  
FEDERAL HIGHWAY ADMINISTRATION



AS SYSTEM REVISED TO JUNE 27, 1986

COMPUTER GENERATED



## General Notes

8/7/2018

Page 1 of 1

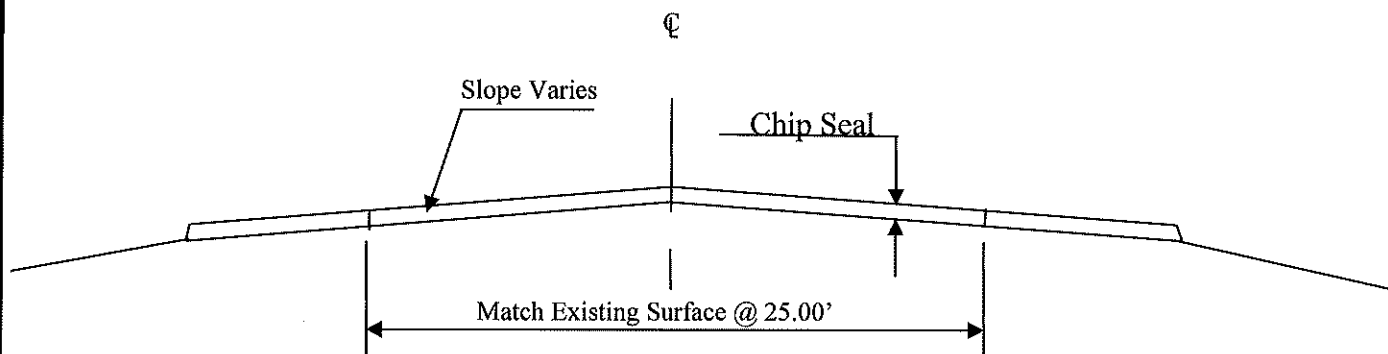
---

Project No. 50 - 29 KA 5094-01

Note

- 1 Permanent Striping to be done by KDOT.
  
- 2 The contractor is responsible for establishing and maintaining centerline of the traveled way for the duration of the project. Splitting the traveled way with a tape measure is an acceptable technique to establish centerline. This work is considered subsidiary to other items in the contract.
  
- 3 Rumble strips are to be installed prior to chip seal.

**TYPICAL SECTION**



not to scale

**ROADWAY WIDTHS**

Location	Miles	Approx. Width	Location	Miles	Approx. Width
<b>Roadway</b>					
Begin @ Existing Header East of Spearville, thence East to Ford/Edward County Line	9.440	25.00'			
<b>Widen(s)</b>					
RP 142.59 to 142.76 RT	0.1700	11.50'			
RP 142.47 to 142.57 LT	0.1000	11.50'			
RP 143.43 to 143.58 RT	0.1700	11.50'			
RP 143.47 to 143.64 LT	0.1700	11.50'			

**RATE OF APPLICATION**

Cover Material (CM-L-2) @ **0.0082** cuyd/sqyd

Emulsified Asphalt (CRS-1HP) @ **0.42** gal/sqyd X 8.35 #gal

	Date: 8/3/2018	<b>KANSAS DEPARTMENT OF TRANSPORTATION</b>
<b>FORD Co.</b>	<b>PROJ. NO. 50-29-KA- 5094 -01</b>	<b>TITLE: CHIPSEAL</b>

**GENERAL NOTES**

Construction of centerline rumble strips in asphalt pavement is paid under the bid item "Rumble Strips (Milled) (Centerline)". All work and materials required to construct the strips in accordance to these details and Special Provisions are included in this item.

See typical sections for other surfacing details.

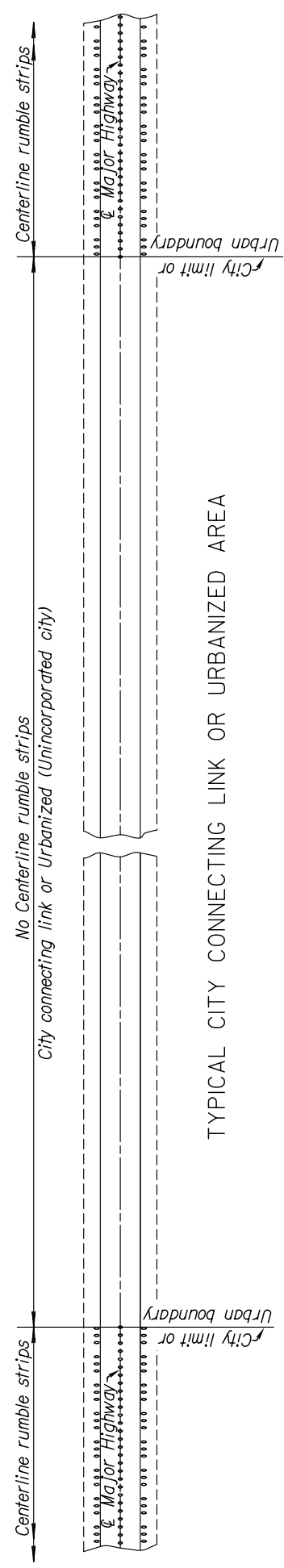
Do not construct rumble strip on bridges or concrete bridge approaches.

No variation in spacing between depressions will be permitted.

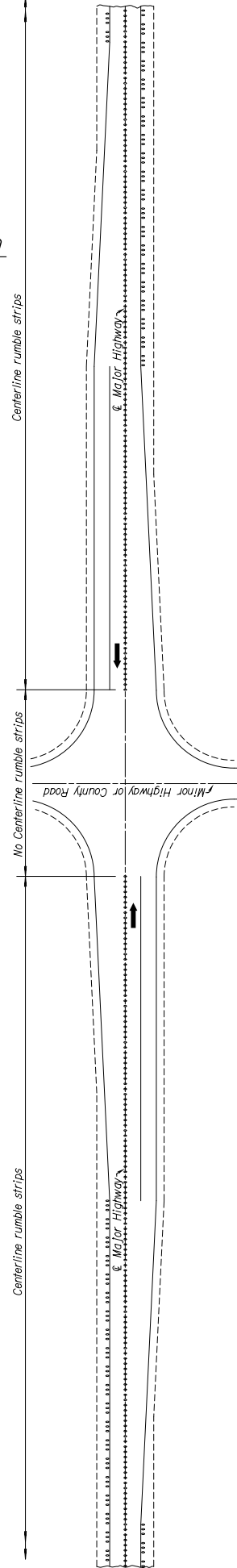
Either rumble strip shape is acceptable with no mixing of shapes on a project unless approved by the engineer.

For Shoulder Rumble Strip details see Standard drawing RD707.

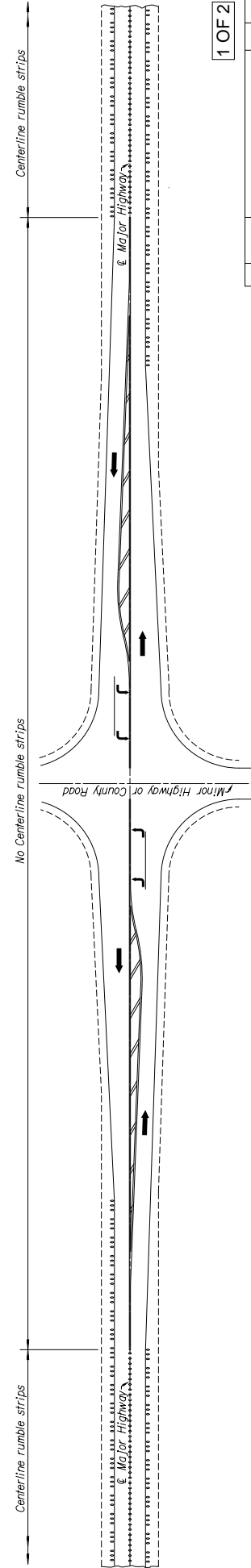
**50-29-KA- 5094 -01**



TYPICAL CITY CONNECTING LINK OR URBANIZED AREA



TYPICAL RURAL INTERSECTION WITH BYPASS LANES



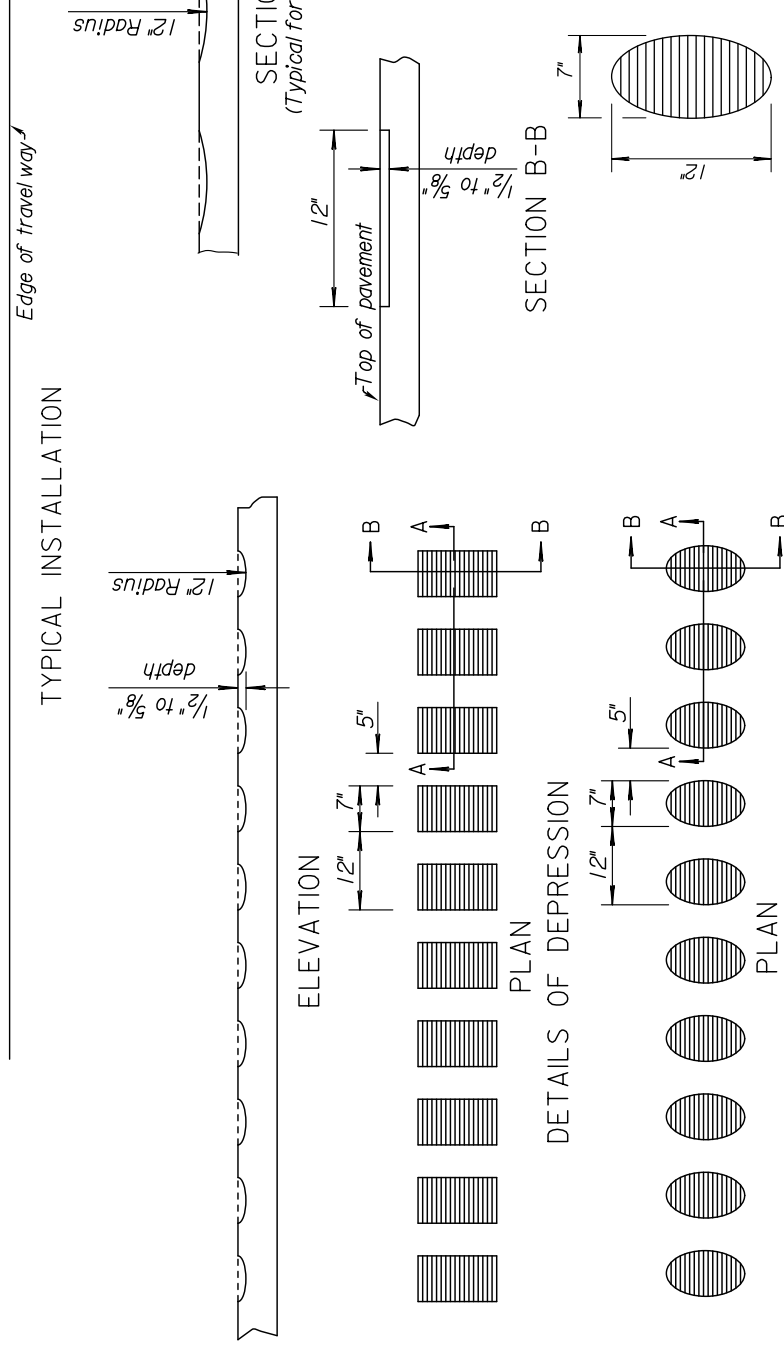
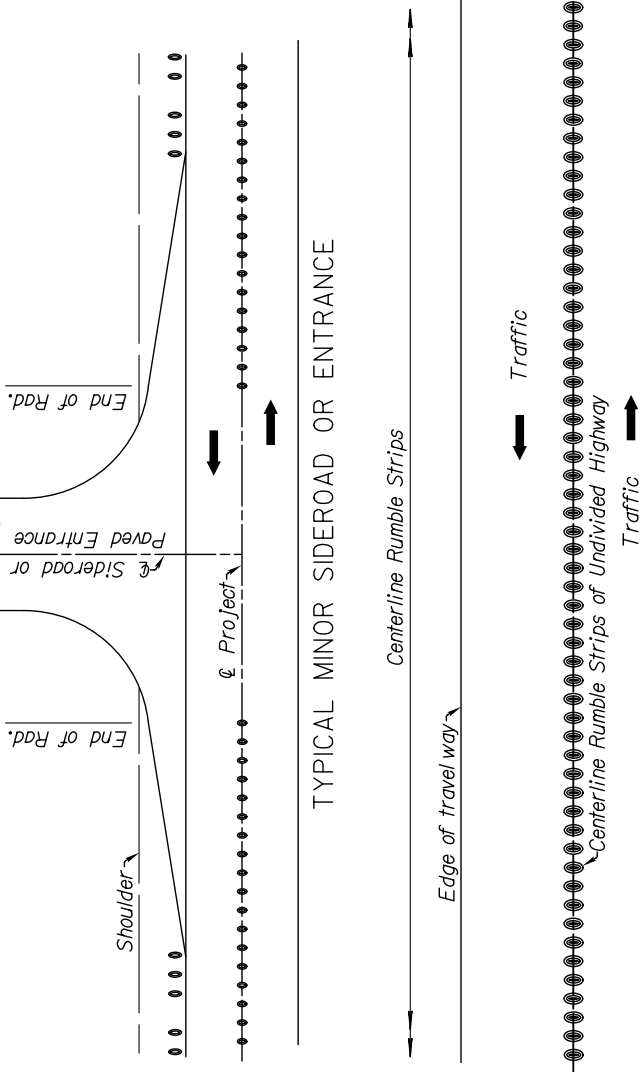
TYPICAL RURAL INTERSECTION WITH LEFT TURN LANES

1 OF 2

NO.	DATE	REVISIONS	BY	APP'D
2	11-15-11	Revised notes	S.W.K.	J.O.B.
1	9-24-09	Rev. & rumble strips thru road.	S.W.K.	J.O.B.

KANSAS DEPARTMENT OF TRANSPORTATION				
MILLED RUMBLE STRIPS (CENTERLINE)				
RD706	5-26-11	JIMMIE O. BRANN	APPROVAL	
	08-11-11	DAVID L. BOYD	DESIGN	
		QUANUKA	DETAIL	
		TRAVIS C. KIDD	TRAFFIC	



SECTION B-B (ALT. SHAPE)

2 OF 2

MILLED RUMBLE STRIPS (CENTERLINE)

KANSAS DEPARTMENT OF TRANSPORTATION

RD706

NO.	DATE	REVISIONS	BY	APP'D
2	11-15-10	Revised notes	S.W.K.	J.O.B.
1	9-24-09	Rem & Rumble strips thru grade.	S.W.K.	J.O.B.
DESIGN OK.				
CHECK OK.				
APPROVAL				
5-28-11				
JAMES O. BROWNE				
DIRECTOR				
7-7-09				
KDOT Graphics Certified				

**SUMMARY OF TRAFFIC CONTROL DEVICES  
(FOR INFORMATION ONLY)**

All traffic control devices shall be placed in accordance with the applicable KDOT Traffic Control Standards. The contractor shall provide all signs and other traffic control devices for proper traffic control of all construction activities. Quantities listed are estimates only. Contractor operations may require additional signs and traffic control devices, this will be subsidiary to the bid item traffic control.

WORK ZONE SIGNS *			
SIGN NO.	SIZE - SQ. FT.		
	0-9.25	9.26-16.25	16.26 & OVER
R2-1	4		
R4-1	2		
W3-4		2	
W3-5		2	
W8-11			
W14-3		2	
W20-1		2	
W20-4		2	
W20-5			
W20-7		4	
W21-5			
W8-15		2	
W8-15P	2		
G20-4			
KG20-2	4		
KM4-20	2		
KG-20-5	2		
KI-104a			
KI-105a			

LIGHTED DEVICES *	
WORK ZONE WARNING LIGHT (TYPE "A" LOW INTENSITY)	
WORK ZONE WARNING LIGHT (RED TYPE "B" HIGH INTENSITY)	
ARROW DISPLAY	
PORTABLE CHANGEABLE MESSAGE SIGN	

BARRICADES *		CHANNELIZING DEVICES *		
TYPE III (4' TO 12')	PEDESTRIAN	FIXED	PORTABLE	PEDESTRIAN
			160	

**SUMMARY OF TRAFFIC CONTROL DEVICES  
(EACH)**

WORK ZONE SIGN (SPECIAL)		
SIGN NO.	16.25 SQ. FT. & LESS	16.26 SQ. FT. & OVER

**RECAPITULATION OF QUANTITIES**

ITEM	QUANTITY	UNIT
WORK ZONE SIGNS (0 TO 9.25 SQ. FT.)		EADA
WORK ZONE SIGNS (9.26 TO 16.25 SQ. FT.)		EADA
WORK ZONE SIGNS (16.26 SQ. FT. & OVER)		EADA
WORK ZONE BARRICADES (TYPE 3 - 4' TO 12')		EADA
WORK ZONE BARRICADES (PEDESTRIAN)		EADA
CHANNELIZER (FIXED)		EADA
CHANNELIZER (PORTABLE)		EADA
CHANNELIZER (PEDESTRIAN)		EADA
WORK ZONE WARNING LIGHT (TYPE "A" LOW INTENSITY)		EADA
WORK ZONE WARNING LIGHT (RED TYPE "B" HIGH INTENSITY)		EADA
ARROW DISPLAY		EADA
PORTABLE CHANGEABLE MESSAGE SIGN		EADA
PAVEMENT MARKING (TEMPORARY)		
4" SOLID (TYPE I)		STA./LINE
4" SOLID (TYPE II)		STA./LINE
4" BROKEN (8")(TYPE I)		STA./LINE
4" BROKEN (8")(TYPE II)		STA./LINE
4" BROKEN (3")(TYPE I)		STA./LINE
4" BROKEN (3")(TYPE II)		STA./LINE
4" DOTTED EXTENSION (TYPE I)		STA./LINE
4" DOTTED EXTENSION (TYPE II)		STA./LINE
SOLID (LINE MASKING TAPE)		STA./LINE
BROKEN (LINE MASKING TAPE)		STA./LINE
SYMBOL (TYPE I)		EACH
SYMBOL (TYPE II)		EACH
FLEXIBLE RAISED PAVEMENT MARKERS (4" BROKEN (8"))		STA./LINE
FLEXIBLE RAISED PAVEMENT MARKERS (4" BROKEN (3"))	498.4	STA./LINE
PAVEMENT MARKING REMOVAL		LIN. FT.
CONCRETE SAFETY BARRIER (TYPE F3) (TEMPORARY)		LIN. FT.
CONCRETE SAFETY BARRIER (TYPE F3) (TEMP.-INSTALL ONLY)		LIN. FT.
CONCRETE SAFETY BARRIER (TYPE F3) (TEMP.-RELOCATE)		LIN. FT.
INERTIAL BARRIER SYSTEM		EACH
REPLACEMENT MODULES (IBS)		EACH
WORK ZONE SIGN (SPECIAL) (16.25 SQ. FT. & LESS)		EACH
WORK ZONE SIGN (SPECIAL) (16.26 SQ. FT. & OVER)		EACH
RIGID RAISED PAVEMENT MARKER (TYPE I)		EACH
RIGID RAISED PAVEMENT MARKER (TYPE II)		EACH
TRAFFIC SIGNAL INSTALLATION (TEMPORARY)		LUMP SUM
TRAFFIC CONTROL (INITIAL SET UP)		LUMP SUM
TRAFFIC CONTROL	LUMPSUM	LUMP SUM
FLAGGER (SET PRICE)	1	HOURLY

**NOTES:**

3				
2				
1	11/10/16	Removed Replacement Modules Summary Table, Added "(IBS)" to Replacement Modules description	JGB	
NO.	DATE	REVISIONS	BY	APP'D

KANSAS DEPARTMENT OF TRANSPORTATION

**TRAFFIC CONTROL  
SUMMARY OF DEVICES  
RECAPITULATION OF QUANTITIES**

TE795				
FHWA APPROVAL	08/01/15	APP'D	Kirstina Erickson	
DESIGNED	B.A.H.	DETAILED	R.W.B.	QUANTITIES TRACED